

Unsettled

August 26, 2017 - January 21, 2018

Nevada Museum of Art

Final Exhibition Checklist

	<p>Francis Aljys <i>Tornado</i> <i>Milpa Alta</i> 2000-10 Video documentation of an action Duration: 39 minutes Courtesy David Zwirner, New York/London. © Francis Aljys</p>
	<p>Olga de Amaral <i>Pueblo Q</i> 2012 Linen, gesso, acrylic, gold leaf 39 3/8 x 78 3/4 inches Courtesy of Casa Amaral</p>
	<p>Edgar Arceneaux <i>Peaks Above TheHeadlines, (Tonight)</i> 2017 Watercolor and enamel on mirror glass and paper 20 1/2 x 16 1/2 x 4 3/4 inches Courtesy of the artist and Susanne Vielmetter Los Angeles Projects</p>
	<p>Edgar Arceneaux <i>Peaks Above The Headlines, (New)</i> 2017 Watercolor and enamel on mirror glass and paper 21 x 17 inches Courtesy of the artist and Susanne Vielmetter Los Angeles Projects</p>
	<p>Edgar Arceneaux <i>Peaks Above The Headlines, (Negro)</i> 2017 Watercolor and enamel on mirror glass and paper 21 x 17 1/2 inches Courtesy of the artist and Susanne Vielmetter Los Angeles Projects</p>



John Baldessari and
George Nicolaidis
*California Map Project Part III:
California – Mexico Boundary Project*
1969
Archival prints on mounted Dibond
8 x 12 inches
Courtesy of John Baldessari, George Nicolaidis
and Marian Goodman Gallery, New York and Paris



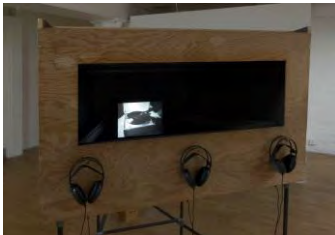
Guillermo Bert
Mapuche Portal #1
2014
Wool and natural dyes encoded with Aztec bar code
4 x 5 1/2 feet
Courtesy of the artist.



Guillermo Bert
Zapotec Poet
2015
Wool and natural dyes encoded with Aztec bar code woven
by Natalia Toledo
64 x 40 inches
Collection of the Museum of Latin American Art, Long
Beach, CA, Gift of Michael Weber and
Frances Spivy-Weber



Chris Burden
All the Submarines of the United States of America
1987
Cardboard, vinyl thread, typeface
Overall: 158 x 216 x 144 inches
Dallas Museum of Art purchase with funds donated by the
Jolesch Acquisition Fund, The 500, Inc., the National
Endowment for the Arts, Bradbury Dyer, III, Mr. and Mrs.
Bryant M. Hanley, Jr., Mr. and Mrs. Michael C. Mewhinney,
Deedie and Rusty Rose, and Mr. and Mrs. William T.
Solomon.



Janet Cardiff & George Bures Miller
The Muriel Lake Incident
1999
Wood, binaural audio, video projection, and steel
72 1/2 x 90 1/4 x 62 inches
Duration: 5 minutes
Courtesy of the artists and Luhring Augustine, New York.



Emily Carr
Vanquished
1930
Oil on canvas
36 ¼ x 50 ¾ inches
Collection of the Vancouver Art Gallery, Emily Carr Trust



Emily Carr
Totem Forest
ca. 1930
Oil on canvas
50 5/8 x 36 ¼ inches
Collection of the Vancouver Art Gallery, Emily Carr Trust



Bruce Conner
CROSSROADS
1976
Digitally restored 2013, 35mm, black and white, sound
Duration: 37 minutes (converted to video).
Original music composed and performed by Patrick Gleeson and Terry Riley, Restored by UCLA Film & Television Archive
Courtesy Conner Family Trust and Kohn Gallery



Minerva Cuevas
Which Way Does the Arrow Point?, from the series, *Smokey's Law*
2017
Wall painting and light projection
Dimensions variable
Courtesy of the artist and kurimanzutto, Mexico City



Gerard Curtis Delano
Navajo Camp
ca. 1930s
Oil on Masonite
18 1/16 x 23 7/8 inches
Collection of Carl & Marilyn Thoma

HAYO, JAYO, MAASE, JI
-PIA, HIBIA, HIBIANGA,
JIBBIAE, HIBI, HIBIO, JI
-BBI, EBEE, JIPI, JIBIE,
IPADO, IPADU, YPADU,
COCA, KUKKA.

ERYTHROXYLON
NOVOGRANATENSE

Wilson Díaz
*Scientific, Colonial and Indigenous Names of the
Coca Plant*
2004-17
Pencil and seed pulp of coca plant
40 1/8 x 28 3/8 inches
Courtesy of the artist and Instituto de Visión



Wilson Díaz
*Movement of the Liberation
of the Coca Plant*
2009-17
Pencil and seed of coca plant
19 3/4 x 13 3/4 inches
Courtesy of the artist and Instituto de Visión



Sonia Falcone
Campo de Color (Color Field)
2017
Terra cotta plates, dry pigments, spices, salts
Dimensions variable
Courtesy of the artist



Al Farrow
*Classic Mimbres Black-on-
White, Style IV, ca. late 20th century, Mushroom Clouds
Over the Pueblos, from
the Mimbres series*
1993
Polyester resin with clay filler and paint
diam: 10 1/2 inches, d: 4 inches
Promised gift of Timothy Anglin Burgard to the Nevada
Museum of Art, in honor of Al Farrow



Al Farrow
*Classic Mimbres Black-on-White, Style IV, ca. late 20th
century, Nuclear Fallout Shelter Sign,
from the Mimbres series*
1993
Polyester resin with clay filler and paint
Diam: 10 1/2 inches D: 4 inches
Collection of Ray Beldner, Courtesy of Catharine Clark
Gallery, San Francisco



Justin Favela
Popocatepetl e Iztaccihuatl vistos desde Atlixco after Jose Maria Velasco
2016
Paper and glue
64 x 82 x 2 inches
Courtesy of the artist



Bruno Fazzolari
Unsettled
Eau de Parfum
2017
H: 15 inches D: 12 inches
Courtesy of the artist



Bruno Fazzolari
Unsettled
2017
Archival pigment print on Hahnemühle Museum Etching
39 x 51 inches
Courtesy of the artist



Ana Teresa Fernández
Erasing the Border (Borrando la Frontera)
2013
Oil on canvas
48 x 72 inches
The Bedford Cherubino Collection



Ana Teresa Fernández
Erasing the Border (Borrando la Frontera)
2012
Video
Duration: 3 minutes, 31 seconds
Courtesy of the artist and Gallery Wendi Norris, San Francisco



Nicholas Galanin
Tsu Heidei Shugaxtutaan 1 & 2 (We Will Again Open This Container of Wisdom That Has Been Left in Our Care)
2006
Two channel video, Duration: Part I, 4 minutes, 36 seconds; Part II, 4 minutes, 6 seconds
Courtesy of the artist



Nicholas Galanin
Things Are Looking Native, Native's Looking Whiter
2012
Digital photograph
30 x 40 inches
Anchorage Museum, Rasmuson Foundation Art Acquisition Fund Purchase, 2012.21.3



Nicholas Galanin
Get Comfortable
2012
Digital photograph
30 x 40 inches
Courtesy of the artist



Nicholas Galanin
Your Inane Perspective: Haa Aaní Haa Kusteeyíx Sitee (Our Land is Our Life)
2015
Digital photograph
30 x 41 inches
Anchorage Museum, Saradell Ard Fund Purchase, 2016.4.1



Nicholas Galanin and Nep Sidhu
No Pigs in Paradise
2016
Mixed media
Dimensions variable
Courtesy of the artists

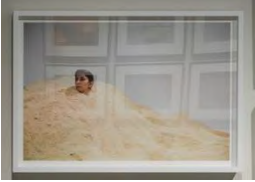


Regina José Galindo

Desierto

2015

Commissioned and produced by Galería Gabriela Mistral, Santiago de Chile. Photo: Rodrigo Maulen, Video: Andrés Lima and Sebastián Pando
Courtesy of the artist



Gunther Gerzso

Limite II (Limit or Boundary)

1962

Mixed media and oil on Masonite

14 ½ x 24 ½ inches

Collection of the Palm Springs Art Museum,
Gift of Mr. and Mrs. Jennings Lang



Julieta Gil

Fragments From Las Vegas

2017

Diptych, Photogrammetry of pre-Columbian art from
Barrick Museum of Art, Archival pigment prints on Moab
Entrada Rag

40 x 29 inches each

Courtesy of the artist



Flor Garduño

Magueyes

1986

Gelatin silver print

16 x 20 inches

Courtesy of the artist



Rodney Graham
Paradoxical Western Scene
2006
Painted aluminum
58 x 48 x 7 inches
Courtesy of the artist



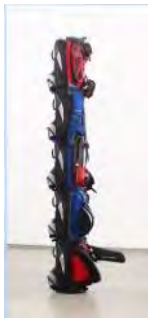
Federico Herrero
Untitled
2015
Oil, acrylic and mixed media on canvas,
78 3/4 x 59 1/16 inches
From the collection of Kai Loebach. © Federico Herrero.
Courtesy of the artist and Sies + Höke, Düsseldorf



Federico Herrero
Untitled
2015
Oil, acrylic and mixed media on canvas,
78 3/4 x 59 1/16 inches
From the collection of Kai Loebach. © Federico Herrero.
Courtesy of the artist and Sies + Höke, Düsseldorf



Graciela Iturbide
Mujer Ángel, Desierto de Sonora (Angel Woman, Sonora Desert), from the series *Los que viven en la arena*
1979
Gelatin silver print
13 x 19 inches
Courtesy of the artist



Brian Jungen
1960
2007
Polyester, metal, painted wood on paper sonotube
156 x 48 1/8 x 36 inches
Collection of Art Gallery of Ontario, Toronto,
Promised Gift of Michael and Sonja Koerner



Brian Jungen
1970
2007
Polyester, metal, painted wood on paper sonotube
151 1/8 x 29 x 30 inches
Collection of Art Gallery of Ontario, Toronto,
Promised Gift of Rosamond Ivey



Brian Jungen
1980
2007
Polyester, metal, painted wood on paper sonotube
139 x 38 x 27 1/8 inches
Collection of Art Gallery of Ontario, Toronto,
Purchased with the assistance of The David Yuile
and Mary Elizabeth Hodgson Fund



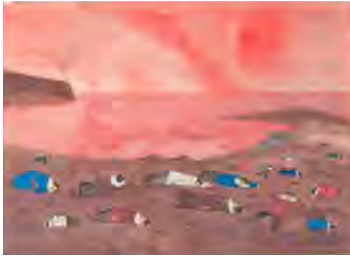
Brian Jungen
Prototype for New Understanding #23
2005
Nike Air Jordans
18 1/2 x 20 1/2 x 5 7/8 inches
Collection of Debra and Dennis Scholl



Paul Kos
Roping Boar's Tusk
1971
DVD, Duration: 1 minute loop
Collection of Deborah and Andy Rappaport, San Francisco.



Ken Lisbourne
Cape Thompson!
2004
Watercolor
17 1/2 x 21 1/2 inches
Anchorage Museum Collection, Museum Purchase



Ken Lisbourne
Cape Thompson!
2004
Watercolor
17 ½ x 21 ½ inches
Anchorage Museum Collection, Museum Purchase



Edmundo Lopez
Untitled
1998
Earthenware
H: 11 ¼ inches Width: 11 ¼ inches Diam: 11 ¼ inches
Collection of Bill Gilbert & Anne Nelson



Rafael Lozano-Hemmer
Solplano
2011
Custom-made LED screen, computerized surveillance tracking system, fluid dynamic algorithms (Navier Stokes, fractal flames, reaction diffusion and Perlin noise), aluminum, stainless steel, glass
diam: 55 7/8 inches, d: 6 11/16 inches
The Aldala Collection of Diamond-Newman Fine Arts, LLC.



Rebecca Lyon
Women of the North (Aleut)
2004
Copper, glass, shell and patina
68 1/8 x 40 x 8 inches
Anchorage Museum Collection,
Rasmuson Foundation Art Acquisition Fund Purchase



Rebecca Lyon
Women of the North (Athabascan)
2004
Copper, glass, shell and patina

Anchorage Museum Collection,
Rasmuson Foundation Art Acquisition Fund Purchase



Rebecca Lyon
Women of the North (Tlingit/Haida)
2004
Copper, glass, shell and patina
68 1/8 x 40 x 8 1/16 inches
Anchorage Museum Collection,
Rasmuson Foundation Art Acquisition Fund Purchase



Jack Malotte
Taking the Spirit Out of Mt. Tenabo
2012
Ink on paper
52 x 60 inches
Collection of the Nevada Museum of Art, Museum
purchase with funds provided by deaccessioning



Jack Malotte
The End
1983
Watercolor and ink on paper
22 x 29 3/4 inches
Collection of the Nevada Museum of Art, Gift of William
and Janet Abernathy



Da-ka-xeen Mehner
Finding My Song
2012
Video installation, Dimensions variable
Courtesy of the artist



Da-ka-xeen Mehner
Finding My Song
2012
Goat skin, deer skin, wood, video projection
Dimensions variable
Anchorage Museum Collection, Rasmuson Foundation Art
Acquisition Fund Purchase



Da-ka-xeen Mehner
Native Photographer (Artist) Photographing a Woman,
From the series *Reinterpretation*
2006
Digital print
24 x 36 inches
Courtesy of the Artist



Da-ka-xeen Mehner
Da-ka-xeen, the Thlinget Artist, From the series
Reinterpretation
2005
Digital print
24 x 36 inches
Courtesy of the Artist



Da-ka-xeen Mehner
The Thlinget Artist, Da-ka-xeen, From the series
Reinterpretation
2007
Digital print
24 x 36 inches
Courtesy of the Artist



Da-ka-xeen Mehner
The Artist Alone with His Thoughts, From the series
Reinterpretation
2007
Digital print
24 x 36 inches
Courtesy of the Artist



Ana Mendieta
Untitled
from *Siluetas Series, Mexico*
1973-77, Estate prints 1991
12 Estate color photographs
16 x 20 inches each
Private Collection, New York



Pilo Mora
Untitled
1998
Earthenware
h: 10 1/2 inches, diam: 12 1/2 inches
Collection of Bill Gilbert & Anne Nelson



Gerardo Murillo (Dr. Atl)
El volcán en la noche estrellada (The volcano in a starry night)
1950
Oil on Masonite
29 1/2 x 28 3/4 inches
Instituto Nacional de Bellas Artes/Museo Nacional de Arte.



Georgia O'Keeffe
Untitled (Pederal)
1941
oil on board 7 x 16 inches
Collection of the Georgia O'Keefe Museum, Santa Fe, New Mexico; gift of the Georgia O'Keefe Foundation



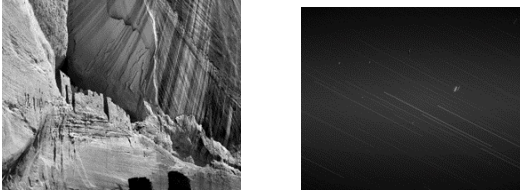
Georgia O'Keeffe
Road Past the View
1964
Oil on canvas
18 1/8 x 30 inches
Collection of Carl & Marilyn Thoma



Ortiz-Torres
Power Tools (Herramientas)
1999
Tool #1: customized leafblower machine with electric motor and car battery (by Cody Sanchez) and chromed low-rider bicycle club plaque, displayed on mirror and Astroturf pedestal, on a carpet of Astroturf ringed with cedar chips
Tool #2: customized leaf-blower machine with 24-karat gold-plated engine, velvet, and metal-flake candy apple paint, displayed on mirror and Astroturf pedestal, on a carpet of Astroturf; .3) Banner: synthetic fabric banner, Overall dimensions approximately: 96 x 96 x 96 inches.
Los Angeles County Museum of Art, Modern and Contemporary Art Council, 2000 Art Here and Now Purchase (M.2000.124.1-3),



Trevor Paglen
NSA-Tapped Fiber Optic Cable Landing Site, Morro Bay, California, United States
2015
C-Print and mixed media on navigational chart, C-print
image: 48 x 60 inches
Map image: 48 x 56-7/8 inches
Lannan Collection



Trevor Paglen
Artifacts (Anasazi Cliff Dwellings, Canyon de Chelly, Spacecraft in Perpetual Geosynchronous Orbit, 35,786 km above Equator)
2010
Diptych, C-prints
50 x 40 inches each
Lannan Collection



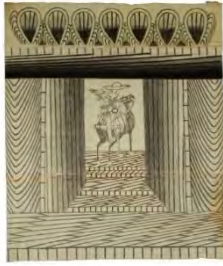
Anges Pleton
Winter
1933
Oil on canvas
30 x 28 inches
Crocker Art Museum purchase: Paul LeBaron Theibaud, George and Bea Gibson Fund, Denise and Donald C. Timmons, Melza and Ted Barr, Sandra Jones, Linda M. Lawrence, Nancy Lawrence and Gordon Kelin, Nancy S. and Dennis N. Marks, William L. Snider and Brian Cameron, Stephenson Foundation, Alan Templeton, A.J. and Susana Mollient Watson, and other donors.



Agnes Pelton
Idyll
ca. 1952
Oil on canvas
20 x 19 inches
Jeri L. Wolfson Collection



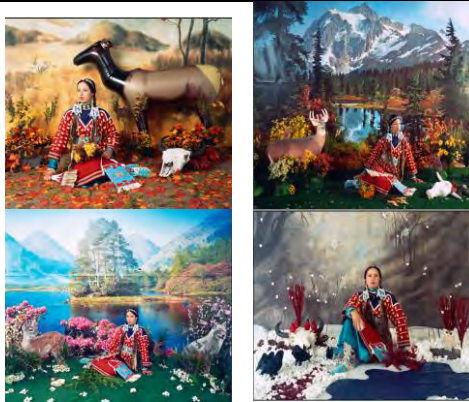
Jaune Quick-to-See Smith
Herding
1985
Oil on canvas
66 x 84 inches
Albuquerque Museum, Museum purchase, 1985 General Obligation Bonds, 1986.98.1



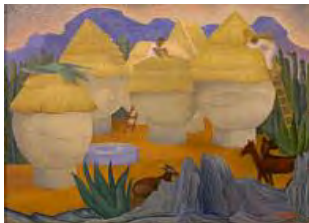
Martín Ramírez
Untitled (*Black and White Caballero No. 4*)
ca. 1950–55
graphite, tempera and crayon on paper
34 ¼ x 23 ¾ inches
Collection of the Nevada Museum of Art, The Robert S. and Dorothy J. Keyser Foundation Art of the Greater West Collection Fund



Martín Ramírez
Untitled (*Arches, 5 Panels*)
ca. 1960–63
Gouache, colored pencil and graphite on paper
28 ½ x 73 inches
Courtesy of the Estate of Martín Ramírez and Ricco/Maresca Gallery, New York



Wendy Red Star
Fall, Indian Summer, Spring, Winter, from the series, *Four Seasons*
2006
Archival pigment prints on Sunset Fiber rag
35 1/2 x 40 inches
Courtesy of the artist



Fermin Revueltas
Corncribs (Los Trosjes)
1933
Oil on canvas
29 ¾ x 33 ½ inches
Collection of the Palm Springs Art Museum,
Gift of the Estate of Herbert E. Toor



Teri Rofkar
1964 Earthquake Robe
2006
Raven's Tail Robe, Merino wool, sea otter fur, deerskin
approx. 5 x 7 feet
On loan from the Ted Stevens Anchorage International Airport, Alaska State Council on the Arts, Percent for Art Program.



Ed Ruscha
Cowboy Picture
2003
Acrylic on canvas
24 x 26 inches
Collection Leisa Austin/Imago Galleries, Palm Desert.



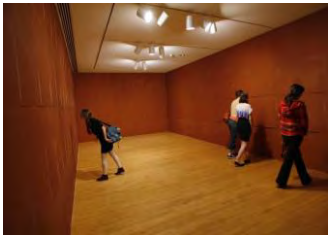
Ed Ruscha
Lost Empires, Living Tribes
1984
Oil on canvas
64 x 64 inches
The Marciano Collection, Los Angeles



Ed Ruscha
Rancho
1968
Oil on canvas
60 x 54 inches
The Museum of Modern Art, New York, Gift of Steven and Alexandra Cohen



Ed Ruscha
Charles Atlas Landscape
2003
Acrylic, pencil and ink on canvas
78 x 78 inches
Collection of the artist



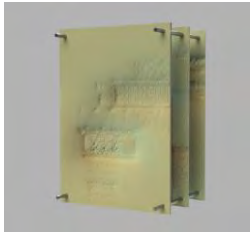
Ed Ruscha
Chocolate Room
1970-2004
Chocolate on paper
27 1/2 x 17 7/8 inches each
Installation dimensions variable
The Museum of Contemporary Art, Los Angeles, Purchased with funds provided by the Acquisition and Collection Committee



Ed Ruscha
Intense Curiosity-Gross Neglect
1980
Oil on canvas
22 x 80 inches
Collection of the Palm Springs Art Museum. Gift of Steve Chase



Ed Ruscha
Atomic Princess
1990
Acrylic on canvas
28 x 30 inches
Private Collection



Daniel Schwarz
MDR (Micro Data Repository)
2017
WiFi router, custom software, aluminum prints,
aluminum shafts
16 x 24 x 12 inches
Courtesy of the artist



Bonnie Ora Sherk
A Living Library is Cultivating the Human & Ecological Garden
Installation (small works gallery)
Yellow Wall: Overview
Blue Wall: Bernal Heights Living Library & Think Park Nature Walk
Yellow Green Wall: OMI/Excelsior Living Library & Think Park - San Francisco
Grass Green Wall: Roosevelt Island Living Library & Think Park - New York City (includes video)



Phillip K. Smith III
Lucid Stead Elements #4
2015
Brushed aluminum, wood, acrylic, mirror, LED lighting, and custom electric components
48 3/4 x 35 1/2 x 6 inches
Collection of the Palm Springs Art Museum, Museum purchase with funds provided by Donna MacMillan



Rufino Tamayo
The Volcano (Le Volcan)
1958
Oil on canvas
38 1/4 × 57 1/2 inches
Collection of Gwendolyn Weiner



Rufino Tamayo
Barren Landscape (Paisaje Árido)
not dated
Oil on canvas
38 x 51 inches
The Bernard and Edith Lewin Collection of Mexican Art
(AC1997.LWN.10) Los Angeles County Museum of Art, Los Angeles, California, U.S.A.



Frohawk Two Feathers
*Map of the Greater West,
Or, The Lemurian Triangle*
2017
Acrylic, ink, coffee, tea on paper
48 x 60 inches
Courtesy of the artist and Johannes Vogt Gallery,
New York



Bruce Yonemoto
Sounds Like the Sound of Music
2005
Video
Duration: 4 minutes, 14 seconds
Courtesy of the artist



Andrea Zittel
*Prototype For Billboard at A-Z West: Big Rock on Hill
Behind House*
2011
AC plywood, polyurethane, matte acrylic paint
48 x 96 inches
Courtesy of the artist and Regen Projects, Los Angeles



Marilyn Bridges
Parker Rattlesnake, Arizona
1983
Gelatin silver print
11 x 14 inches
Collection of the Nevada Museum of Art,
The Altered Landscape, Carol Franc Buck Collection



Marilyn Bridges
Blythe Site #2, Blythe, California
1983
Gelatin silver print
11 x 14"
Collection of the Nevada Museum of Art,
The Altered Landscape, Carol Franc Buck Collection



Marilyn Bridges
Winterhaven Stickman, California
1983
gelatin silver print
10 1/8 x 13"
Collection of the Nevada Museum of Art, The Altered
Landscape, Carol Franc Buck Collection



Mark Klett
*Mummy Cave Ruins, Canyon del Muerto, Canyon de Chelly
National Monument, Arizona. (Site #78-53) Second View
Rephotographic Survey
Project Portfolio*
1978 (reprinted 1984-5)
Gelatin silver print
8 x 10"
Collection of the Nevada Museum of Art,
The Altered Landscape, Carol Franc Buck Collection



John K. Hillers
*Ancient Ruins, Canon de Chelly.
(Site #78-53) Second View Rephotographic Survey Project
Portfolio*
Not dated (reprinted 1984-5)
Gelatin silver print
8 x 10"
Collection of the Nevada Museum of Art,
The Altered Landscape, Carol Franc Buck Collection



Timothy O'Sullivan
Rock Formations, Pyramid Lake, Nevada (Site #79-33)
Second View Rephotographic Survey Project Portfolio
1867 (printed 1984-5)
gelatin silver print
6 x 8 1/4"
Collection of Nevada Museum of Art, The Altered
Landscape, Carol Franc Buck Collection



Mark Klett
Rock Formations, Pyramid Lake, Nevada (Site #79-33)
Second View Rephotographic Survey Project Portfolio
1979 (printed 1984-5)
gelatin silver print
6 x 8 1/4"
Collection of Nevada Museum of Art, The Altered
Landscape, Carol Franc Buck Collection



Timothy O'Sullivan
Cañon de Chelle, Walls of the Grand Canon about 1,200
ft. in height. (Site #78-51)
Second View Rephotographic Survey Project Portfolio
1873 (reprinted 1984-5)
gelatin silver print
8 x 10"
Collection of the Nevada Museum of Art, The Altered
Landscape, Carol Franc Buck Collection



Mark Klett
Canon de Chelle, Walls of the Grand Canon about 1,200
ft. in height. (Site #78-51)
Second View Rephotographic Survey Project Portfolio
1978 (reprinted 1984-5)
gelatin silver print
8 x 10"
Collection of the Nevada Museum of Art, The Altered
Landscape, Carol Franc Buck Collection







Greg MacGregor

Burned Wagon Remains, Deep Sand Section, 40 Mile
Desert, Carson River Route, Nevada
from the series *Overland*

1991/1997

Gelatin silver print

Collection of the Nevada Museum of Art,
The Altered Landscape, Carol Franc Buck Collection,
Partial gift of the artist

	<p>Joan Myers <i>Wind Generators, Near Palm Springs, California</i> from the series "Western Power" 1999 platinum palladium print with watercolor edition #3 10 3/4" x 28 1/2" Collection of the Nevada Museum of Art, The Altered Landscape, Carol Franc Buck Collection</p>
	<p>Joan Myers <i>Salton Sea Mailbox</i> from the series "Salton Sea" 1987 palladium print 18 x 22 " Collection of the Nevada Museum of Art, The Altered Landscape, Carol Franc Buck Collection</p>
	<p>Joan Myers <i>Salton City Golf Course (Palms)</i> from the series "Salton Sea" 1987 platinum palladium print with watercolor edition #4/12 22 x 28" Collection of the Nevada Museum of Art, The Altered Landscape, Carol Franc Buck Collection</p>
	<p>Joan Myers <i>Salton City Golf Course (Bridge)</i> from the series "Salton Sea" 1987 platinum palladium print with watercolor edition #4/12 22 x 28" Collection of the Nevada Museum of Art, The Altered Landscape, Carol Franc Buck Collection</p>



Lewis Baltz
Hidden Valley, Looking Southwest, from the *Nevada* portfolio
1977
gelatin silver print
6 1/4 x 9 3/8"
Collection of the Nevada Museum of Art, The Altered Landscape, Carol Franc Buck Collection



Lewis Baltz
Model Home, Shadow Mountain, from the *Nevada* portfolio
1977
gelatin silver print
6 1/4 x 9 3/8"
Collection of the Nevada Museum of Art, The Altered Landscape, Carol Franc Buck Collection



Lewis Baltz
U.S. 50, East of Carson City, from the *Nevada* portfolio
1977
gelatin silver print
6 1/4 x 9 3/4"
Collection of the Nevada Museum of Art, The Altered Landscape, Carol Franc Buck Collection



Lewis Baltz
Nevada 33, Looking West, from the *Nevada* portfolio
1977
gelatin silver print
6 1/4 x 9 3/8"
Collection of the Nevada Museum of Art, The Altered Landscape, Carol Franc Buck Collection



Edward Weston
Rhyolite, Nevada
1938
Vintage gelatin silver print
7 1/2 x 9 1/2"
Collection of the Nevada Museum of Art, The Altered Landscape, Museum purchase



Ansel Adams
Winter Sunrise, Sierra Nevada,
from Lone Pine, California
1944
Gelatin silver print
9 5/8 x 14"
Collection of the Nevada Museum of Art,
The Altered Landscape, Carol Franc Buck Collection



Drex Brooks
Sand Creek Massacre Site, Kiowa County, Colorado from
the series *Sweet Medicine*
1987
Gelatin silver print
14 x 20 1/2"
Collection of the Nevada Museum of Art,
The Altered Landscape, Gift of the artist



Drex Brooks
Ruby Valley Treaty Site, Nevada
Sweet Medicine Series
1990
gelatin silver print
14 x 20 7/8"
Collection of the Nevada Museum of Art, The Altered
Landscape, Gift of the artist



Wanda Hammerbeck
The Ephemeral Quality of Human Achievement
1993
chromogenic print
16 x 23 1/2"
Collection of the Nevada Museum of Art, The Altered
Landscape, Carol Franc Buck Collection



Wanda Hammerbeck
Water Absence / Presence
1992
chromogenic print
16 1/8 x 23 1/2"
Collection of the Nevada Museum of Art, The Altered
Landscape, Carol Franc Buck Collection



Terry Falke
Mitchell Butte, Utah/Arizona Border
1995
C-print
17 7/8 x 22 3/4 inches
frame: 26 x 30 3/4 x 1 1/2"
Collection of the Nevada Museum of Art, The Altered Landscape, Gift of the Artist



Terry Falke
Bird Refuge in a Dying Salton Sea, California, 1999
1999
C-print
18 1/8 x 22 1/2"
Collection of the Nevada Museum of Art, The Altered Landscape, Gift of the artist



Len Jenshel
Great Basin National Park, Nevada
1987
C-print
14 1/2 x 21 3/4"
frame: 24 3/8 x 31 x 1 1/2"
Collection of Nevada Museum of Art, The Altered Landscape, Carol Franc Buck Collection



Len Jenshel
Death Valley National Monument, California
1987
C print
20 x 24"
Collection of the Nevada Museum of Art, The Altered Landscape, Carol Franc Buck Collection



Pre-Columbian, Lowland Maya, present day El Petén, Guatemala
Bowl
Late Classic period A.D. 600-900
ceramic polychrome
h: 3.5 inches diam: 8.75 inches
Provided courtesy of UNVL Marjorie Barrick Museum of Art



Pre-Columbian, Maya
Tetrapod bowl and lid
Early Classic period, AD, 300-600
h: 5.25 inches diam: 12.625 inches
Provided courtesy of UNVL Marjorie Barrick Museum of Art



Pre-Columbian
Vessel
Late Classic period, AD 600-900
Polychrome, Maya
h: 4.66 diam: 5.75
Provided courtesy of UNVL Marjorie Barrick Museum of Art



Pre-Columbian
Tripod Bowl
Late Classic period, AD 600-900
Polychrome, Maya
h: 3.25 diam: 10.5
Provided courtesy of UNVL Marjorie Barrick Museum of Art



Pre-Columbian, Lowland Maya, Nakbe region, Guatemala
Plate, Codex style
Late Classic period, AD 600-900
Polychrome, Ceramic
h: 1.25 inches diam: 11.25 inches
Collection of the University of Nevada, Las Vegas Marjorie Barrack Museum of Art, Gift of Michael C. and Mannelta Braunstein



Pre-Columbian, West Mexico, Shaft Tomb culture
Effigy vessel
Formative period, B.C. 100 - A.D. 250
Burnished brick redware
h: 4.75 inches diam: 9.25
Collection of the University of Nevada, Las Vegas Marjorie Barrack Museum of Art, Gift of Michael C. and Mannelta Braunstein



Pre-Columbian, West Mexico, Shaft Tomb culture
Effigy Vessel
Formative Period, B.C. 100 – AD 250
Nichrome yellow-orange and reddish orange burnished slip. Complex shape, two-tier olla with a constricted neck and out-flaring flattened rim. In form of a large shallow bowl holding roasted maguey (mescal) leaves, a food staple; crowned by 2 molded human faces, janiform.
H: 9 inches diam.:9 ½ inches
Collection of the University of Nevada, Las Vegas Marjorie Barrack Museum of Art, Gift of Michael C. and Mannelta Braunstein



Western Mexico Shaft Tomb Culture, present day Colima, Mexico
Colima Dog Vessel, 100 B.C.–A.D. 250, Ceramic, redware
H: 8 ½ inches width: 4 ¾ inches
Collection of the University of Nevada, Las Vegas Marjorie Barrack Museum of Art, Gift of Michael C. and Mannelta Braunstein



Pre-Columbian, Nicoya Zone, present day Guanacaste, Costa Rica
Zoomorphic Figurine, A.D. 800-1100, Ceramic, buffware
H: 2 ¼ inches width: 3 ½ inches depth: 9 ½ inches
Collection of the University of Nevada, Las Vegas Marjorie Barrack Museum of Art, Gift of Michael C. and Mannelta Braunstein



Lowland Maya, present day El Petén, Guatemala
Toad Whistle, A.D. 600-900, Ceramic, buffware
H: 1 ¾ inches width: 1 ½ inches depth: 1 1/8 inches.
Collection of the University of Nevada, Las Vegas Marjorie Barrack Museum of Art, Gift of Michael C. and Mannelta Braunstein



Anasazi, present day Southwestern United States
Sagi Black on White Pitcher
ca. 1250
clay
Courtesy of John and Brenda Blom



Anasazi, present day Southwestern United States
McElmo Black on White Ladle
ca. 800
Clay
Courtesy of John and Brenda Blom



Hopi, present day Arizona
Tusayan Polychrome Ladle
ca. 1250
Clay
Courtesy of John and Brenda Blom



Salado, present day Arizona
Obliterated Three Neck Olla
ca. 1150
Clay
Courtesy of John and Brenda Blom



Mimbres, present day New Mexico
Boldface Bowl
ca. 975
Clay
Courtesy of John and Brenda Blom



Mogollon, present day Southwestern United States and Northern Mexico
McDonald Corrugated Bowl
ca. 1100
Clay
Courtesy of John and Brenda Blom



Salado, present day Arizona
Gila Polychrome Jar
ca. 1325
Clay
Courtesy of John and Brenda Blom



Athabascan (Attributed)
Bucket
c. 1950 - 1955
Wood, spruce root
h: 10 inches w: 10 inches diam: 12.5 inches
Collection of the Anchorage museum at Rasmuson Center,
Gift of Miss Mary E. Rowley
1965.014.022








Athabascan
Basket
Birchbark
Mid 20th century
Birchbark, willow root
h:9 inches w: 8 inches diam:4 inches
Collection of the Anchorage Museum, Gift of Miss Mary E. Rowley



Florence Pitka Knox Athabascan, present day interior
Alaska
Basket
mid-20th century
Birch bark, willow root
H: 17 ½ inches width: 13 ½ inches depth: 4 ½ inches
Collection of the Anchorage Museum, Gift of Miss Mary E. Rowley



Unangan, present day South and Southwestern Alaska
Basket
not dated
Grass
H: 6 ½ inches diam: 9 inches
Collection of the Anchorage Museum

	<p>Unangan, present day South and Southwestern Alaska <i>Basket</i> ca. 1900 Rye grass, wool H: 7 ¼ inches width: 8 ¾ inches diam.: 8 ¾ inches Collection of the Anchorage Museum</p>
	<p>Yup'ik, present day southwestern Alaska <i>Basket</i> ca. 1900 Grass, willow bark H: 10 inches diam.: 10 inches Collection of the Anchorage Museum, Gift of the Rasmuson Foundation</p>
	<p>Tlingit, Northwest coast, present day United States and inland Canada <i>Basket</i> ca. 1900 Spruce root, dye H: 6 inches width: 5 inches diam.: 8 inches Collection of the Anchorage Museum, Exchange with the Alaska State Museum</p>
	<p>Dona Tortes, Cahuilla, Santa Rosa Reservation, Southern California <i>Bowl with Screwbean Flower Design</i> 1901-25 Sumac, natural dyed juncus on a deer grass foundation 4 x 6 ¾ inches Collection of the Palm Springs Art Museum, Gift of Cornelia B. White from the Marjorie Rose Dougan Collection</p>
	<p>Dona Tortes, Cahuilla, Santa Rosa Reservation, Southern California <i>Tray with Fern Designs</i> ca. 1920 Indian hemp and natural and dyed juncus on a deer grass bundle foundation 1 ½ x 12 ¼ inches Collection of the Palm Springs Art Museum, Gift of Cornelia B. White from the Marjorie Rose Dougan Collection</p>

	<p>Lupe Alberras, Cahuilla, Santa Rosa Reservation, Southern California <i>Rain and Sun Eagle Basket</i> ca. 1910 Sumac, natural and dyed juncus on a deer grass foundation 5 x 17 ¾ inches Collection of the Palm Springs Art Museum, Gift of Cornelia B. White from the Marjorie Rose Dougan Collection</p>
	<p>Cleo Torres, Cahuilla, Santa Rosa Reservation, Southern California <i>Tray with "Northern Star" Design</i> 1901-25 Natural and dyed juncus on a deer grass bundle foundation 1 ¼ x 8 ½ inches Collection of the Palm Springs Art Museum, Gift of Cornelia B. White from the Marjorie Rose Dougan Collection</p>
	<p>Cleo Torres, Cahuilla, Santa Rosa Reservation, Southern California <i>Oval Basket with Pakwa'al (Water Dog) Designs</i> 1901-25 Sumac, natural and dyed juncus on a deer grass bundle foundation 11 ½ x 7 7/8 x 2 ¼ inches Collection of the Palm Springs Art Museum, Gift of Cornelia B. White from the Marjorie Rose Dougan Collection</p>
	<p>Mae Rice, Cahuilla/Luiseño, Pauma Reservation, Southern California <i>Rattlesnake Basket</i> 1901-25 Sumac, natural and dyed juncus on a deer grass bundle foundation 6 x 19 ¼ inches Collection of the Palm Springs Art Museum, Gift of Cornelia B. White from the Marjorie Rose Dougan Collection</p>
	<p>Wasco/Wishram, present day Oregon <i>Sally Bag</i> not dated Commercial jute, tule stem, corn husk H: 9 ¼ inches Diam.: 6 ¾ inches Milo Coates Collection, Nevada State Museum, Carson City</p>



Northern Paiute, present day East-central California,
Western Nevada and Eastern Oregon

Hat

ca. 1900-20

Willow

H: 4 7/8 inches

Collection of Nevada State Museum



Panamint Shoshone, present day Central Eastern
California

Polychrome Bowl

early 20th c.

Willow, devil's claw, quill

H: 4 1/4 inches diam.: 29 3/4 inches

Collection of the Nevada Museum of Art



Panamint Shoshone, present day Central Eastern
California

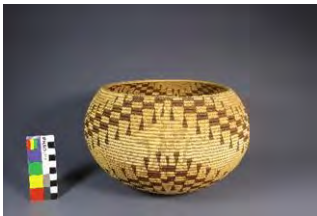
Basket

ca. 1930

Devil's claw, willow, quill

H: 5 3/4 inches diam.: 9 1/2 inches

Collection of the Nevada Museum of Art



Lizzie Toby Peters, Washoe, present day Nevada and
California

Degikup

1901

Willow, bracken fern

H: 6 1/2 inches diam.: 11 3/8 inches

Dr. S. L. Lee Collection, Nevada State Museum, Carson
City, Nevada



Panamint Shoshone, present day Central Eastern
California

Polychrome Bowl

early 20th century

Willow, devil's claw, quill

H: 4 1/4 inches diam.: 8 inches

Collection of the Nevada Museum of Art



Karuk/Yurok, present day Northern California

Hat

early 20th c.

White bear grass, maiden hair fern, hazel twig, willow

H: 3 ½ inches diam.: 7 ¼ inches

Collection of the Nevada Museum of Art, Bequest of
Charles F. Cutts