

The Nuclear Landscape

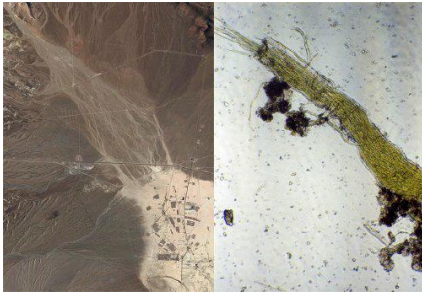
January 20, 2018 – January 6, 2019

FINAL EXHIBITON CHECKLIST

Carol Franc Buck Gallery



Chris Drury
Life in the Field of Death II
Soil from the Nevada Test Site
2008
Collection of the Nevada Museum of Art
Gift of the artist



Chris Drury
Life in the Field of Death I
Digital archival print
2008
Collection of the Nevada Museum of Art
Gift of the artist



Emmet Gowin
**Subsidence Craters on
Yucca Flat, Nevada Test Site**
1997
Gelatin silver print
Collection of the Nevada Museum of Art
The Altered Landscape
Carol Franc Buck Collection



Jo Whaley
Atomic Tea Party
1993/printed 2001
Chromogenic print
Collection of the Nevada Museum of Art
Gift of Dr. Mark Levy and Jamie Brunson



Peter Goin

(Column 1)

**Collapsed Hangar, Yucca Flat
Yucca Mountain (Jackass Flats)
How Would a House Withstand Nuclear
Wind?**

Accelerated Erosion

(Column 2)

**Destroyed Road and Crater
Sedan Crater
Railroad Trestle
Enclosed and Electrified Fence**

From the series, **Nuclear Landscapes,
the Nevada Test Site, 1985-1991**

Chromogenic prints

Collection of Nevada Museum of Art

The Altered Landscape

Carol Franc Buck Collection



Patrick Nagatani

**F-16 Falcons (U.S.A.F. Thunderbird
Team), Residential Backyard Facing
Hollowed Out Manzano Mountain Nuclear
Storage Area, Kirtland A.F.B.,
Albuquerque, 1990**

Chromogenic print

Collection of the Nevada Museum of Art

The Altered Landscape

Gift of the artist



Patrick Nagatani

**'Bida Hi'/ Opposite Views;
Northeast - Navajo Tract Homes
and Uranium Tailings, Southwest
Shiprock, New Mexico, 1990**

Chromogenic prints

Collection of the Nevada Museum of Art

The Altered Landscape

Carol Franc Buck Collection



Patrick Nagatani
Radium Springs, New Mexico, 1989
Chromogenic prints
Collection of the Nevada Museum of Art
The Altered Landscape
Carol Franc Buck Collection



Rachel Stiff
Proof
2017
Oil on panel
Loan courtesy of the artist



Mark Klett
**Nuclear Generating Station,
Palo Verde, 50 Miles from Phoenix**
1986
Gelatin silver print
Collection of the Nevada Museum of Art
The Altered Landscape
Carol Franc Buck Collection



Michael Light
Clockwise from upper left:
1 057 **BAKER/21 Kilotons/Bikini Atoll/1946**
2 053 **GEORGE/225 Kilotons/Enewetak Atoll/1951**
3 076/**WAHOO/9 Kilotons/Enewetak Atoll/1958**
4 089/**AZTEC/410 Kilotons/Christmas Island/1962**
5 094/**SUNSET/1 Megaton/Christmas Island/1962**
6 056/**ABLE/21 Kilotons/Bikini Atoll/1946**
7 060/**SEMINOLE/13.7 Kilotons/Enewetak Atoll/1956**
8 085/**FRIGATE BIRD/600 Kilotons/Christmas Island/1962**
9 042/**EASY/31 Kilotons/Nevada/1951**

**10 051/X-RAY/37 Kilotons/Enewetak
Atoll/1948**

**11 037/ZUCCHINI/28
Kilotons/Nevada/1955**

**12 046/LITTLE FELLER 1/18
Tons/Nevada/1962**

From the series, **100 Suns**, 2003

Inkjet prints

Courtesy of the artist