



# The Contact: Quilts of the Sierra Nevada by Ann Johnston

February 16, 2019 – May 19, 2019

## FINAL EXHIBITON CHECKLIST

Robert Z. Hawkins Gallery

	<p><b>The Contact: Smoke at Sunset</b> 2012 Hand-dyed cotton, hand and machine stitched 84 x 20 ¾ inches Collection of the artist</p>
	<p><b>The Contact: Cross Polarized Granite</b> 2015 Hand-dyed fabrics, machine stitched 85 ¼ x 25 inches Collection of the artist</p>
	<p><b>The Contact: Cracked and Cooked</b> 2013 Hand-dyed cotton, machine stitched 85 x 31 inches Collection of the artist</p>



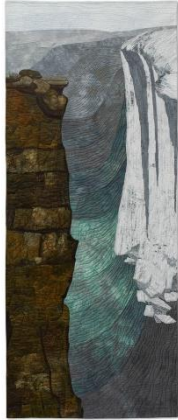
**The Contact: Black and White**

2012

Hand-dyed cotton, hand and machine stitched

83 1/2 x 31 1/2 inches

Collection of the artist



**The Contact: After the Ice**

2012

Hand-dyed cotton, hand and machine stitched

83 1/2 x 34 1/4 inches

Collection of the artist



**The Contact: Skyline**

2016

Hand-dyed cotton, machine stitched

32 x 124 inches

Collection of the artist



**The Contact: Vigil**

2012

Hand-dyed cotton, hand and machine stitched

83 1/4 x 34 1/4 inches

Collection of the artist



**The Contact: Sheeted Intrusion**  
2013  
Hand-dyed cotton, machine stitched  
84  $\frac{3}{4}$  x 34  $\frac{3}{4}$  inches  
Collection of the artist



**The Contact: Vertical Joints**  
2013  
Hand-dyed fabrics, machine stitched  
83 x 35  $\frac{1}{2}$  inches  
Collection of the artist



**The Contact: Split**  
2016  
Hand-dyed fabrics,  
hand and machine stitched  
85 x 39  $\frac{1}{4}$  inches  
Collection of the artist



**The Contact: Souptime**  
2014  
Hand-dyed cotton, machine stitched  
82  $\frac{1}{2}$  x 42 inches  
Collection of the artist



**The Contact: Competent Rock**  
2018  
Hand-dyed cotton, machine stitched  
84 x 38 inches  
Collection of the artist



**The Contact: Deep Blue Lead**  
2012  
Hand-dyed cotton, machine stitched  
84 x 46 1/4 inches  
Collection of the artist



**The Contact: Wet Land**  
2019  
Hand-dyed cotton, machine stitched  
56 1/2 x 60 inches  
Collection of the artist



**The Contact: Gold Fever 110 Ma**  
2012  
Hand-dyed cotton, machine stitched  
84 x 47 inches  
Collection of the artist



**The Contact: Exfoliating**

2018

Hand-dyed cotton, machine stitched

25 x 72 inches

Collection of the artist



**The Contact: Headwaters**

2016

Hand-dyed cotton, machine stitched

84 x 50 inches

Collection of the artist



**The Contact: Eureka Chimney**

2013

Hand-dyed fabrics, machine stitched

86 x 50 1/2 inches

Collection of the artist



**The Contact: Nevadan Orogeny**

2011

Hand-dyed cotton, machine stitched

83 3/4 x 52 1/2 inches

Collection of the artist



**The Contact: Talus**  
2016  
Hand-dyed fabrics, machine stitched  
87 1/4 x 56 inches  
Collection of the artist



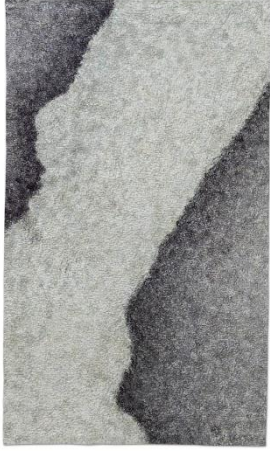
**The Contact: 07.25.12, 20:13**  
2015  
Hand-dyed fabrics, machine stitched  
58 1/5 x 57 inches  
Collection of the artist



**The Contact: Inside Granite**  
2015  
Hand-dyed fabrics, machine stitched  
57 3/4 x 57 1/4 inches  
Collection of the artist



**The Contact: Dry Lake**  
2014  
Hand-dyed cotton, machine stitched  
55 x 60 inches  
Collection of the artist



**The Contact: Tuolumne Intrusive Suite**  
2013  
Hand-dyed cotton, hand stitched  
84 1/4 x 50 1/2 inches  
Collection of the artist

