

Victorian Radicals: From the Pre-Raphaelites to the Arts & Crafts Movement

Sep 6, 2019

William Etty

Pandora Crowned by the Seasons, ca. 1824-30

Oil on canvas

67 15/16 x 95 11/16 in. (unframed) ; 81 5/16 x 109 1/16 x 5 15/16 in. (framed)

172.6 x 243 cm (unframed) ; 206.5 x 277 x 15.1 cm (framed)

Presented by the Birmingham Society of Artists, 1867



Charles Lock Eastlake

The Champion, 1824

Oil on canvas

48 1/4 x 68 1/2 in. (unframed) ; 78 1/16 x 85 15/16 x 7 7/8 in. (framed)

122.5 x 174 cm (unframed) ; 198.3 x 218.2 x 20 cm (framed)

Purchased, 1956



Edwin Henry Landseer

The Hunting of Chevy Chase, 1825-26

Oil on canvas

56 1/2 x 67 1/4 in. (unframed) ; 70 1/16 x 81 1/8
x 5 1/8 in. (framed)

143.5 x 170.8 cm (unframed) ; 178 x 206 x 13 cm
(framed)

Purchased with Art Fund support, 1952



David Cox

The Skylark, 1849

Oil on canvas

28 x 36 in. (unframed) ; 41 7/16 x 49 5/8 x 4
15/16 in. (framed)

71.1 x 91.4 cm (unframed) ; 105.3 x 126 x 12.5
cm (framed)

Presented by Frederick John Nettlefold, 1947



Alfred Joseph Stothard (designer and engraver),
Royal Mint (manufacturer)

Art Union medal for 1845, distributed 1846

Obv. Sir Joshua Reynolds (1723-1792)

Rev. *The Infant Hercules* after Reynolds, 1845

Bronze

2 1/4 x 2 1/4 x 1/4 in.

5.71 x 5.71 x .25 cm

Purchased



William Wyon RA (designer and engraver),
Royal Mint (manufacturer)
Art Union medal for 1843, distributed 1847
Obv. Sir Francis Chantry (1781-1842)
Rev. **James Watt** (1736-1819) after Chantry,
1847
Bronze
2 1/8 x 2 1/8 x 1/4 in.
5.45 x 5.45 x .25 cm
Acquired before 1993



Leonard Charles Wyon (designer and engraver),
Royal Mint (manufacturer)
Art Union medal for 1848, distributed 1848
Obv. William Hogarth (1697-1764), after
Roubiliac
Rev. Detail of *The Election* after Hogarth, 1848
Bronze
2 1/8 x 2 1/8 x 1/4 in.
5.45 x 5.45 x .25 cm
Purchased



Henry Weigall (designer and engraver), Royal
Mint (manufacturer)
Art Union medal for 1854, distributed 1854
Obv. John Flaxman (1755-1826)
Rev. *Mercury and Pandora* after Flaxman, 1854
Bronze
2 3/16 x 2 3/16 x 1/4 in.
5.55 x 5.55 x .25 cm
Purchased



Leonard Charles Wyon (designer and engraver),
 Royal Mint (manufacturer)
 Art Union medal for 1861, distributed 1861
 Obv. Sir David Wilkie (1785-1841)
 Rev. Detail of *The Rent Day* after Wilkie, 1861
 Bronze
 2 1/8 x 2 1/8 x 1/4 in.
 5.45 x 5.45 x .25 cm
 Purchased



John Lawlor (sculptor), Minton & Co.
 (manufacturer)
Solitude, 1856
 Porcelain, so-called "Parian Porcelain," slip cast
 Impressed on front of base: SOLITUDE; on side
 of base: ART UNION OF LONDON, 1852; on
 back: J Lawlor Sculpt
 19 11/16 x 8 7/16 x 9 in.
 50 x 21.43 x 22.86 cm
 Presented by Mr. Alan Green



W. H. B. & J. Richardson (manufacturer)
 Goblet, ca. 1850
 Opaline Glass, so-called "Richardson's Vitriified,"
 painted with enamel
 6 13/16 x 3 1/2 x 3 5/8 in.
 17.3 x 8.99 x 9.1 cm (8.9 cm (top diameter), 9 cm
 (base diameter))
 Purchased from the Handley-Read Collection
 with the assistance of the V&A Purchase Grant
 Fund



Samuel Colman

The Delivery of Israel out of Egypt, ca. 1831-32

Oil on canvas

53 3/8 x 78 3/8 in. (unframed) ; 66 1/16 x 91 1/2 x 6 1/8 in. (framed)

135.6 x 199.1 cm (unframed) ; 167.8 x 232.5 x 15.5 cm (framed)

Presented by Mr. George Smith and Mrs. Rose Grey with Art Fund support, 1950



Belmont Glassworks (manufacturer)

Celery vase/comport, 1846

Lead glass, cut

15 9/16 x 14 x 14 in. (dimensions when assembled)

39.53 x 35.5 x 35.5 cm (dimensions when assembled)

Presented by Mrs. Richards



Elkington, Mason & Co. (manufacturer)

Ewer, ca. 1854

Electroformed copper, electroplated and oxidized

Applied manufacturer's mark under foot: E&Co [below a crown]

14 x 7 15/16 x 4 1/2 in.

35.56 x 20.16 x 11.5 cm

Purchased, 1882



Elkington, Mason & Co. (manufacturer)
Flower stand, 1851
Electroformed and electroplated nickel silver
with glass liner
Stamped on base: 2944 [pattern number] M [date
letter for 1851]
6 1/8 x 6 3/4 x 5 1/2 in.
15.6 x 17.2 x 14 cm
Presented by Mrs. Anne Hull Grundy



John Leighton (designer), Elkington, Mason &
Co. (manufacturer)
Commemorative tray or tablet, ca. 1851
Electroformed and electroplated copper, partly
gilded
Applied manufacturer's mark under foot: E&Co
[below a crown]
1 3/16 x 12 13/16 in. (width is diameter)
3 x 32.5 cm (width is diameter)
Purchased



Minton & Co. (manufacturer)
Floor tile, 1851
Earthenware, inlaid with colored slips
Impressed on back: MINTON & Co. / PATENT /
STOKE-UPON-TRENT
8 1/4 x 8 1/4 x 15/16 in.
21.1 x 21.1 x 2.4 cm
Acquired by transfer, 1975



William Frederick Evans (designer), W. F. Evans & Sons (manufacturer)

Sir Walter Scott's Monument Clock, ca. 1850
Gilded and silvered brass, blued steel, enamel, and marble

24 3/8 x 16 3/8 x 12 5/8 in.

62.4 x 41.6 x 31.2 cm

Presented by Miss P. Evans



John Crossley & Sons (manufacturer), Halifax, West Yorkshire

Carpet shown at the Great Exhibition, ca. 1851
Woven wool and vegetable dyes

72 13/16 x 102 3/4 in.

184.94 x 261 cm

Purchased



James Collinson

An Incident in the Life of St. Elizabeth of Hungary, 1850

Pen and black and brown ink, over traces of graphite, on paper

15 3/4 x 21 1/2 in. (unframed) ; 21 7/8 x 29 1/8 x 7 7/8 in. (framed)

40 x 54.6 cm (unframed) ; 55.5 x 74 x 20 cm (framed)

Purchased (Christina Feeney Bequest Fund), 1929



William Michael Rossetti (editor), Elliot Stock (publisher)

The Germ: Thoughts towards Nature in Poetry, Literature and Art, May 1850

Printed pamphlet in paper cover

7 1/2 x 11 x 9 1/2 in. (open on mount)

19.08 x 27.94 x 24.13 cm (open on mount)

Acquired before 1979



William Holman Hunt

Two Gentlemen of Verona (Valentine Rescuing Sylvia from Proteus), 1851

Oil on canvas

38 3/4 x 52 1/2 in. (unframed) ; 52 1/2 x 64 3/4 x 4 5/16 in. (framed)

98.5 x 133.3 cm (unframed) ; 133.4 x 164.5 x 11 cm (framed)

Purchased, 1887



William Holman Hunt

Portrait of Dante Gabriel Rossetti, 1882-83

Oil on mahogany panel

28 1/8 x 24 7/8 x 3 1/8 in. (framed) ; 11 7/8 x 9 in. (unframed)

71.5 x 63.2 x 8 cm (framed) ; 30.2 x 22.9 cm (unframed)

Purchased with the assistance of funding from the bequest of H. T. Wiggins-Davies to commemorate the services of Alderman W. Byng Kenrick to the City of Birmingham, 1961



Augustus Welby Northmore Pugin (designer),
John Hardman Powell (designer), John Hardman
& Co. (manufacturer)

Tracery light from the east window of Holy
Trinity Church, Grazeley, 1849-50

Stained, painted, and leaded glass

23 1/4 x 21 1/2 x 2 in.

59.1 x 54.6 x 5.1 cm

Presented by the Church of England Church
Commissioners



Augustus Welby Northmore Pugin (designer),
John Hardman Powell (designer), John Hardman
& Co. (manufacturer)

Chalice, 1856-57

Silver gilt and enamel

Sponsor's mark of John Hardman & Co.,

hallmarked for Birmingham 1856-57

10 3/8 x 6 1/2 x 6 1/2 in. (wt: 1209.3 gr)

26.4 x 16.5 x 16.5 cm (wt: 1209.3 gr)

Purchased, 1886



William Butterfield (designer), John Keith
(silversmith and manufacturer)

Altar flagon, 1851-52

Silver

Sponsor's mark of John James Keith, hallmarked
for London 1853-54

13 1/2 x 4 3/4 x 6 3/4 in.

34.5 x 12 x 17 cm

Presented by the Friends of Birmingham
Museums Trust with Art Fund support



William Butterfield (designer), John Keith
(silversmith and manufacturer)
Altar flagon, 1847-48
Silver gilt
Sponsor's mark of John James Keith, hallmarked
for London 1847-48
11 x 7 x 4 1/4 in.
27.9 x 17.75 x 10.8 cm
Presented by Mr. & Mrs. Cox



Ford Madox Brown
Chaucer at the Court of Edward III: Compositional Study, 1845
Graphite with pen and brown ink on paper
13 x 9 7/16 in. (unframed) ; 23 x 17 x 1 in.
(framed)
33 x 24 cm (unframed) ; 58.42 x 43.518 x 2.54
cm (framed)
Presented by subscribers, 1906



Ford Madox Brown
Chaucer at the Court of Edward III: Three Studies of Hands, 1848
Black chalk on paper
11 1/8 x 7 7/8 in. (unframed) ; 23 1/4 x 17 1/8 x 7
7/8 in. (framed)
28.1 x 20.1 cm (unframed) ; 59 x 43.5 x 20 cm
(framed)
Presented by subscribers, 1906



Ford Madox Brown

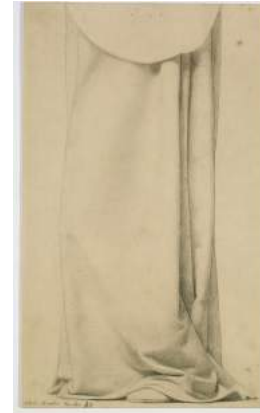
Chaucer at the Court of Edward III: Drapery Study, 1847

Black chalk on paper

14 x 8 3/8 in. (unframed) ; 23 1/4 x 17 1/8 x 7 7/8 in. (framed)

35.5 x 21.2 cm (unframed) ; 59 x 43.5 x 20 cm (framed)

Presented by subscribers, 1906



John Ruskin

An Alpine Valley, the Matterhorn in the Distance, ca. 1844-49

Watercolor over graphite on paper

10 1/2 x 13 7/8 in. (unframed) ; 17 1/8 x 23 1/4 x 7 7/8 in. (framed)

26.9 x 35.4 cm (unframed) ; 43.5 x 59 x 20 cm (framed)

Presented by Alderman F. C. Clayton, 1916



John Everett Millais

The Blind Girl, 1856

Oil on canvas

31 3/4 x 21 in. (unframed) ; 43 1/8 x 32 11/16 x 3 15/16 in. (framed)

80.8 x 53.4 cm (unframed) ; 109.5 x 83 x 10 cm (framed)

Presented by the Right Hon. William Kendrick, 1892



Frederick Sandys

Study of Grasses, Wild Arum, and a Tree Stump, 1858

Graphite and black chalk with white chalk on blue-gray paper

8 1/4 x 13 3/4 in. (unframed) ; 17 1/8 x 23 1/4 x 7 7/8 in. (framed)

23 x 32.8 cm (unframed) ; 43.5 x 59 x 20 cm (framed)

Presented by subscribers, 1906



Ford Madox Brown

Pretty Baa-Lambs, 1851-59

Oil on wood

24 x 30 in. (unframed) ; 34 5/8 x 40 3/8 x 4 5/16 in. (framed)

60.9 x 76.2 cm (unframed) ; 88 x 102.6 x 11 cm (framed)

Purchased, 1956



Ford Madox Brown

Walton-on-the-Naze, 1859-60

Oil on canvas

20 1/8 x 24 1/2 x 3 13/16 in. (framed) ; 12 1/2 x 16 1/2 in. (unframed)

51.1 x 62.2 x 9.7 cm (framed) ; 31.7 x 41.9 cm (framed)

Presented by the Trustees of the Public Picture Gallery Fund, 1915



John William Inchbold

Springtime in Spain, near Gordella, 1866;

retouched 1869

Oil on canvas

12 x 18 1/8 in. (unframed) ; 19 9/16 x 25 11/16 x

2 3/4 in. (framed)

30.5 x 46 cm (unframed) ; 49.7 x 65.3 x 7 cm

(framed)

Presented by Miss Hipkins in memory of her
brother W. E. Hipkins, 1913



John Brett

*Southern Coast of Guernsey from the Cliff over
Moulin Huet*, 1875

Oil on canvas

24 x 42 5/8 in. (unframed) ; 33 1/4 x 51 3/4 x 2

9/16 in. (framed)

60.9 x 108.2 cm (unframed) ; 84.5 x 131.5 x 6.5

cm (framed)

Presented by the Council of the University of
Birmingham, 1927



William Holman Hunt

The Finding of the Saviour in the Temple, 1854
-60

Oil on canvas

33 3/4 x 55 1/2 in. (unframed) ; 58 1/4 x 81 7/8 x

4 3/4 in. (framed)

85.7 x 141 cm (unframed) ; 148 x 208 x 12 cm

(framed)

Presented by Sir John Middlemore, 1896



John Frederick Lewis

The Pipe Bearer, 1856

Oil on wood

16 7/8 x 12 1/4 in. (unframed) ; 27 x 21 3/4 x 4
3/4 in. (framed)

43 x 31 cm (unframed) ; 68.5 x 55.2 x 12 cm
(framed)

Presented by the daughters of William and
Margaret Gerwin, 1954



Henry Wallis

Corner of an Eastern Courtyard, 1870

Oil on canvas

24 x 18 1/2 in. (unframed) ; 28 3/8 x 23 1/8 x 2
9/16 in. (framed)

61 x 47 cm (unframed) ; 72 x 58.7 x 6.5 cm
(framed)

Presented by Harold Wallis, 1918



William Holman Hunt

*Street Scene in Cairo (The Lantern Maker's
Courtship)*, 1854-61

Oil on canvas

21 5/8 x 13 5/8 in. (unframed) ; 33 11/16 x 26 x 1
9/16 in. (framed)

54.8 x 34.7 cm (unframed) ; 85.5 x 66 x 4 cm
(framed)

Presented by the family of Wilfred Byng
Kendrick, 1962



William Holman Hunt

Study of Architectural Mouldings, Dome of the Rock, Jerusalem, 1876

Graphite and black chalk with white chalk on blue-gray paper

19 7/8 x 13 7/8 in. (unframed) ; 29 1/8 x 21 7/8 x 7 7/8 in. (framed)

50.5 x 35.4 cm (unframed) ; 74 x 55.5 x 20 cm (framed)

Presented by the Friends of Birmingham Museums, 1985



Arthur Hughes

The Annunciation, 1858

Oil on canvas

24 1/8 x 14 1/8 in. (unframed) ; 30 11/16 x 21 5/16 x 2 3/4 in. (framed)

61.3 x 35.9 cm (unframed) ; 78 x 54.2 x 7 cm (framed)

Purchased, 1891



Arthur Hughes

The Nativity, 1858

Oil on canvas

24 1/8 x 14 1/8 in. (unframed) ; 30 11/16 x 21 5/16 x 2 3/4 in. (framed)

61.2 x 35.8 cm (unframed) ; 78 x 54.2 x 7 cm (framed)

Purchased, 1891



Dalziel Brothers (engravers), George Routledge & Sons (publisher), Camden Press (printer)

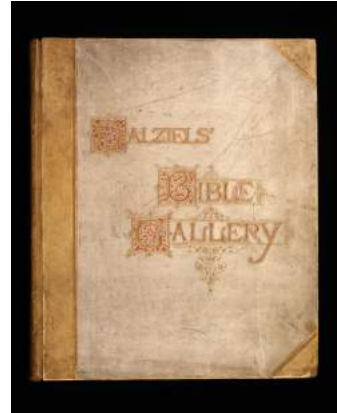
Dalziels' Bible Gallery, 1881

Bound book with 62 wood engravings on India paper

12 1/2 x 22 x 17 1/2 in. (on mount)

31.75 x 55.9 x 44.45 cm (on mount)

Presented by Wilfred Phillips, 1920



Dalziel Brothers (engravers), after John John Everett Millais, Society of the Promotion of Christian Knowledge (publisher)

The Parables of Our Lord and Saviour Jesus Christ, 1885 (originally published by Routledge, Warne & Routledge [London], 1864)

Bound book with 20 wood engravings

8 3/4 x 12 1/2 x 9 3/4 in. (depth includes mount)

22.2 x 31.75 x 24.8 cm (depth includes mount)

Presented by John Crowder, 1970



Ford Madox Brown

Elijah and the Widow's Son, 1864

Oil on wood

20 3/4 x 13 1/2 in. (unframed) ; 28 1/2 x 22 x 2 in.

52.5 x 34.3 cm (unframed) ; 72.39 x 55.88 x 5.1 cm

Presented by Sir John Middlemore, 1912



Dante Gabriel Rossetti

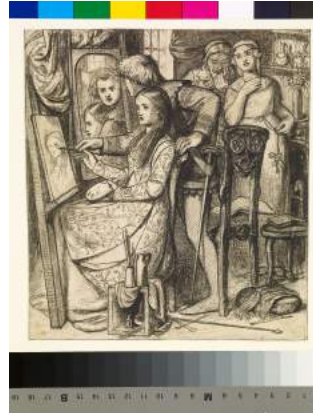
Love's Mirror or a Parable of Love, 1850-52

Pen and black ink over graphite with gray wash
on paper

7 x 7 3/4 in. (unframed) ; 23 1/4 x 17 1/8 x 1 in.
(framed)

17.5 x 19.5 cm (unframed) ; 59 x 43.5 x 2 cm
(framed)

Presented by subscribers, 1903



Dante Gabriel Rossetti

*Found: Study for the Head of the Young
Woman*, possibly 1856

Pen and black ink with wash and scratching-out
on paper

6 7/8 x 7 5/8 in. (unframed) ; 17 1/8 x 23 1/4 x 7
7/8 in. (framed)

17.5 x 19.4 cm (unframed) ; 43.5 x 59 x 20 cm
(framed)

Presented by subscribers, 1903



Edward Moxon (publisher)

Poems by Alfred Tennyson DCL, Poet

Laureate ("The Moxon Tennyson"), Published
by Edward Moxon, London, 1857

Bound book with wood engravings

9 1/2 x 13 1/2 x 9 3/4 in. (width and depth on
mount)

24.1 x 34.3 x 24.8 cm (width and depth on
mount)

Transferred from Birmingham Reference
Library, 1963, and accessioned in 1978



Dante Gabriel Rossetti
Design for the "Moxon Tennyson": *Mariana in the South*, 1856-57
Pen and black ink on paper
4 x 3 1/4 in. (unframed) ; 23 1/4 x 17 1/8 x 7 7/8 in. (framed)
10 x 8.4 cm (unframed) ; 59 x 43.5 x 20 cm (framed)
Presented by subscribers, 1903



John Everett Millais
Waiting, 1854
Oil on wood
18 11/16 x 15 3/8 x 2 1/16 in. (framed) ; 12 3/4 x 9 3/4 in. (unframed)
47.5 x 39 x 5.3 cm (framed) ; 32.4 x 24.8 cm (unframed)
Presented by Mrs. Edward Nettlefold, 1909



Arthur Hughes
The Long Engagement, 1859
Oil on canvas
42 1/8 x 21 in. (unframed) ; 50 3/8 x 29 1/2 x 3 3/8 in. (framed)
107 x 53.3 cm (unframed) ; 128 x 75 x 8.5 cm (framed)
Presented by the executors of the late Dr. Edwin T. Griffiths, 1902



Day dress, ca. 1865
 Purple silk with black machine lace, braid and fringed trim (machine- and hand-stitched)
 56 7/8 in.
 144.5 cm ((length to floor when mounted)
 Interior bust: 90 cm
 Interior waist: 61 cm
 Width: approx. 139 cm at widest point when laid flat)
 Lent by Birmingham Museums Trust on behalf of a Private Lender



Henry Wallis
Chatterton (The Death of Chatterton), 1855-56
 Oil on mahogany
 6 3/4 x 10 in. (unframed) ; 13 5/16 x 16 11/16 x 1 5/16 in. (framed)
 17.3 x 25.3 cm (unframed) ; 33.8 x 42.4 x 3.3 cm (framed)
 Presented by William Kenrick, 1918



Frederick Sandys
Autumn, ca. 1860-62
 Oil on millboard, laid on mahogany
 10 x 14 in. (unframed) ; 17 1/2 x 21 7/16 x 1 3/4 in. (framed)
 25.5 x 35.5 cm (unframed) ; 44.5 x 54.5 x 4.5 cm (framed)
 Presented by George Tangye, 1906



James Campbell

The Wife's Remonstrance, 1858

Oil on canvas

28 3/4 x 18 7/8 in. (unframed) ; 40 9/16 x 30 9/16
x 2 3/4 in. (framed)

73 x 48 cm (unframed) ; 103 x 77.6 x 7 cm
(framed)

Presented by the Trustees of the John Feeney
Charitable Trust, 1958



Henry Wallis

The Stone Breaker, 1857

Oil on canvas

25 3/4 x 31 in. (unframed) ; 34 1/4 x 39 3/4 x 3
15/16 in. (framed)

65.4 x 78.7 cm (unframed) ; 87 x 101 x 10 cm
(framed)

Presented by Charles Aitken, 1936



Ford Madox Brown

Work, 1859-63

Oil on canvas

26 7/8 x 39 in. (unframed) ; 39 3/16 x 51 3/16 x 3
3/4 in. (framed)

68.4 x 99 cm (unframed) ; 99.5 x 130 x 9.5 cm
(framed)

Bequeathed by J. R. Holliday, 1927



Dante Gabriel Rossetti
 Study for the Oxford Union Murals: *Guenevere in the Apple Tree*, 1857
 Pen and brown ink on paper
 9 x 7 in. (unframed) ; 23 1/4 x 17 1/8 x 7 7/8 in. (framed)
 23 x 17.8 cm (unframed) ; 59 x 43.5 x 20 cm (framed)
 Presented by subscribers, 1903



Edward Burne-Jones
The Annunciation, 1859
 Oil on canvas
 53 1/2 x 19 1/2 in. (unframed) ; 58 1/4 x 24 x 2 1/16 in. (framed)
 135.9 x 49.5 cm (unframed) ; 148 x 61 x 5.2 cm (framed)
 Bequeathed by J. R. Holliday



Augustus Welby Northmore Pugin (designer),
 John Hardman & Co (manufacturer)
 Cream jug, 1851
 Silver
 Sponsor's mark of John Hardman & Co.,
 hallmarked for Birmingham 1851–52
 6 3/8 x 3 3/4 x 3 in.
 16.2 x 9.5 x 7.6 cm
 Purchased with assistance of the V&A/MGC
 Purchase Grant Fund and Art Fund support



John Hardman Powell (designer), John Hardman & Co (manufacturer), Birmingham
 Claret pitcher, 1861-62
 Silver, partly gilded, and garnets
 Sponsor's mark of John Hardman & Co.,
 hallmarked for Birmingham 1861-62
 14 1/4 x 6 x 6 in.
 36.2 x 15.25 x 15.25 cm
 Presented by the Friends of Birmingham
 Museums Trust, with Art Fund support, the
 V&A/MGC Purchase Grant Fund, and N. & I.



John Francis Bentley (designer), Hart & Son
 (manufacturer, attributed)
 Monstrance, ca. 1863
 Gilded copper and enamel, with glass and
 precious and semiprecious stones
 26 1/2 x 8 1/2 x 8 1/2 in.
 67.3 x 21.6 x 21.6 cm
 Presented by Mrs. Anne Hull Grundy



Simeon Solomon
Babylon hath been a Golden Cup, 1859
 Pen and black and brown ink, over traces of
 graphite, on paper
 10 1/2 x 11 1/8 in. (unframed) ; 21 7/8 x 29 1/8 x
 7 7/8 in.
 26.6 x 28.3 cm (unframed) ; 55.5 x 74 x 20 cm
 Presented by the Alfred Leadbeater Bequest
 Fund, 1925



Philip Webb (designer), James Powell & Son
(manufacturer)
Claret glass, ca. 1861
Flint glass
5 x 3 1/8 x 3 1/8 in.
12.7 x 7.9 x 7.9 cm
Bequeathed by Miss May Morris, 1939



Philip Webb (designer), James Powell & Son
(manufacturer)
Goblet, 1860
Flint glass
5 1/2 x 3 1/2 x 3 1/2 in.
14 x 8.9 x 8.9 cm
Bequeathed by Miss May Morris, 1939



Philip Webb (designer), James Powell & Son
(manufacturer)
Jar and cover, ca. 1861
Flint glass
7 1/4 x 4 1/4 x 4 1/4 in.
18.4 x 10.8 x 10.8 cm
Bequeathed by Miss May Morris, 1939



Dante Gabriel Rossetti (designer), Morris,
 Marshall, Faulkner & Co. (manufacturer)
Saint George Slaying the Dragon, 1872
 (designed ca. 1862)
 Stained, painted, and leaded glass
 37 3/4 x 30 x 2 in. (framed)
 95.9 x 76.2 x 5.1 cm (framed)
 Purchased



William Morris (designer), Morris, Marshall,
 Faulkner & Co. (manufacturer)
Winter, ca. 1865
 Stained, painted, and leaded glass
 37 x 20 1/4 x 2 in. (framed)
 94 x 51.4 x 5.1 cm (framed)
 Bequeathed by J. R. Holliday



Edward Burne-Jones (designer), Lucy Faulkner
 (painter, attributed), Morris, Marshall, Faulkner
 & Co. (decoration)
The Prince (Formerly The Beast), ca. 1863–70
 (designed 1863)
 Enamel on tin-glazed earthenware
 6 x 6 x 3/8 in. ; 6 x 5 3/4 x 4 1/4 in. (on mount
 dimensions)
 15.2 x 15.2 x .95 cm ; 15.25 x 14.6 x 10.8 cm (on
 mount dimensions)
 Presented by Mr. Alan Green



Edward Burne-Jones (designer), Lucy Faulkner (painter, attributed), Morris, Marshall, Faulkner & Co. (decoration)

The Merchant's Daughter (Beauty), ca. 1863–70 (designed 1863)

Enamel on tin-glazed earthenware

6 x 6 x 3/8 in. ; 6 x 5 3/4 x 4 1/4 in. (on mount dimensions)

15.2 x 15.2 x .95 cm ; 15.25 x 14.6 x 10.8 cm (on mount dimensions)

Presented by Mr. Alan Green



Edward Burne-Jones (designer), Lucy Faulkner (painter, attributed), Morris, Marshall, Faulkner & Co. (decoration)

Amor, ca. 1863–70 (designed 1863)-70

Enamel on tin-glazed earthenware

6 x 6 x 3/8 in. ; 6 x 5 3/4 x 4 1/4 in. (on mount dimensions)

15.2 x 15.2 x .95 cm ; 15.25 x 14.6 x 10.8 cm (on mount dimensions)

Presented by Mr. Alan Green



William Morris (designer), Lucy Faulkner (painter, attributed), Morris, Marshall, Faulkner & Co. (decoration)

Tile: *Fortuna*, ca. 1863–70 (designed 1863)-70

Enamel on tin-glazed earthenware

6 x 6 x 3/8 in. ; 6 x 5 3/4 x 4 1/4 in. (on mount dimensions)

15.2 x 15.2 x .95 cm ; 15.25 x 14.6 x 10.8 cm (on mount dimensions)

Presented by Mr. Alan Green



Dante Gabriel Rossetti

Beata Beatrix, begun 1877 (left unfinished in 1882 and completed by Ford Madox Brown)

Oil on canvas

48 7/16 x 40 15/16 x 3 13/16 in. (framed) ; 34 1/8 x 26 7/8 in. (unframed)

123 x 104 x 9.7 cm (framed) ; 86.8 x 68.3 cm (unframed)

Purchased, 1891



Dante Gabriel Rossetti

Fanny Cornforth, 1874

Colored chalks on paper

28 1/2 x 24 1/4 in. (unframed) ; 34 x 26 x 7/8 in. (framed)

72.3 x 61.6 cm (unframed) ; 86.36 x 66.04 x 2.2 cm (framed)

Presented by subscribers, 1903



Simeon Solomon

Bacchus, 1867

Oil on paper, laid on canvas

19 3/4 x 14 3/4 in. (unframed) ; 29 15/16 x 25 x 2 15/16 in. (framed)

50.3 x 37.5 cm (unframed) ; 76 x 63.5 x 7.5 cm (framed)

Bequeathed by Katherine Elizabeth Lewis, 1961



Frederick Sandys

Morgan le Fay, 1864

Oil on wood

24 3/4 x 17 1/2 in. (unframed) ; 45 11/16 x 39

9/16 x 5 3/8 in. (framed)

63 x 44 cm (unframed) ; 116 x 100.5 x 13.7 cm
(framed)

Presented by the Trustees of the Feeney
Charitable Trust, 1925



Frederick Sandys

Medea, 1866-68

Oil on composite wood with gold leaf

24 1/2 x 18 1/4 in. (unframed) ; 45 11/16 x 39

9/16 x 5 3/8 in. (framed)

62.2 x 46.3 cm (unframed) ; 116 x 100.5 x 13.7
cm (framed)

Presented by the Trustees of the Public Picture
Gallery Fund, 1925



Edward Burne-Jones

*The Tale of Cupid and Psyche: Psyche in the
Presence of Venus*, 1865-66

Graphite over white gouache on boxwood
(uncut woodblock)

4 1/4 x 6 5/8 x 4 in.

10.8 x 16.8 x 10.16 cm

Bequeathed by J. R. Holliday, 1927



Edward Burne-Jones (designer), Elizabeth Burden (blockcutter)

The Tale of Cupid and Psyche: Psyche is Set the Task of collecting the Golden Fleece from Venus' Flocks and Is Helped by a Voice from the Reeds, 1865–66 (printed 1880)

Woodcut on Michallet laid paper

18 1/2 x 12 7/8 in. (unframed) ; 23 1/4 x 17 1/8 x 7 7/8 in. (framed)

46.9 x 32.6 cm (unframed) ; 59 x 43.5 x 20 cm (framed)



Edward Burne-Jones

The Song of Solomon: Study for "Awake, O North Wind!", 1876

Graphite on paper

14 x 8 1/2 in. (unframed) ; 23 1/4 x 17 1/8 x 7 7/8 in. (framed)

35.6 x 21.4 cm (unframed) ; 59 x 43.5 x 20 cm (framed)

Bequeathed by J. R. Holliday, 1927



Edward Burne-Jones

Pygmalion and the Image: Study for the Figure of Pygmalion in *The Soul Attains*, 1875

Graphite, with touches of brown crayon, on paper

9 x 11 3/8 in. (unframed) ; 17 1/8 x 23 1/4 x 7 7/8 in. (framed)

22.8 x 28.9 cm (unframed) ; 43.5 x 59 x 20 cm (framed)

Bequeathed by J. R. Holliday



Edward Burne-Jones

Pygmalion and the Image: The Heart Desires,
1875-78

Oil on canvas

39 x 30 in. (unframed) ; 56 9/16 x 46 x 5 1/8 in.
(framed)

99 x 76.3 cm (unframed) ; 143.7 x 116.8 x 13 cm
(framed)

Presented by Sir John Middlemore, 1903



Edward Burne-Jones

Pygmalion and the Image: The Hand Refrains,
1875-78

Oil on canvas

39 x 30 in. (unframed) ; 56 9/16 x 46 x 5 1/8 in.
(framed)

99 x 76.3 cm (unframed) ; 143.7 x 116.8 x 13 cm
(framed)

Presented by Sir John Middlemore, 1903



Edward Burne-Jones

Pygmalion and the Image: The Godhead Fires,
1875-78

Oil on canvas

39 x 30 in. (unframed) ; 56 9/16 x 46 x 5 1/8 in.
(framed)

99 x 76.3 cm (unframed) ; 143.7 x 116.8 x 13 cm
(framed)

Presented by Sir John Middlemore, 1903



Edward Burne-Jones

Pygmalion and the Image: The Soul Attains,
1875-78

Oil on canvas

39 x 30 in. (unframed) ; 56 9/16 x 46 x 5 1/8 in.
(framed)

99 x 76.3 cm (unframed) ; 143.7 x 116.8 x 13 cm
(framed)

Presented by Sir John Middlemore, 1903



Edward Burne-Jones (designer), Thomas G.
Bowman (glass painter), Morris & Co.
(manufacturer)

Saint Mark, 1883 (designed 1874)

Stained, painted, and leaded glass

56 11/16 x 24 1/8 x 1/4 in. (unframed) ; 57 1/4 x
24 3/4 x 2 in. (framed)

144 x 61.3 x .6 cm (unframed) ; 145.4 x 62.9 x
5.1 cm (framed)

Bequeathed by J. R. Holliday



William Morris (designer), Morris & Co.
(manufacturer and retailer)

"Golden Bough", designed ca. 1888

Silk and linen, hand-loom jacquard-woven

70 1/8 x 104 1/8 in. ; 70 1/8 in. (height variable)

178 x 264.5 cm ; 178 cm (height variable)

Presented by the Friends of Birmingham
Museums Trust



William Morris (designer), Morris & Co. (printer and retailer)

"Strawberry Thief", design registered 1888

Indigo-discharge block-printed cotton

77 1/8 x 37 3/8 in. ; 77 1/8 x 69 5/16 in. (width includes rod and end caps; height variable)

196 x 95 cm ; 196 x 176 cm (width includes rod and end caps; height variable)

Presented by Miss K. E. Harris, 1973



William Morris

"Jasmine" wallpaper design, 1872

Graphite, red chalk, and watercolor on paper

40 x 26 1/2 in. (framed)

100.8 x 67.3 cm (framed)

Presented by the Friends of Birmingham Museums Trust



Dante Gabriel Rossetti

Proserpine, 1881-82

Oil on canvas

39 9/16 x 24 3/16 x 2 3/16 in. (framed) ; 31 x 15 3/8 in. (unframed)

100.5 x 61.5 x 5.5 cm (framed) ; 78.7 x 39.2 cm (unframed)

Presented by the Trustees of the Public Picture Gallery Fund, 1927



Dante Gabriel Rossetti

La Donna della Finestra, 1881

Oil on canvas with underdrawing in chalk and graphite

37 3/4 x 34 1/4 in. (unframed) ; 53 9/16 x 50 3/16 x 3 9/16 in. (framed)

97 x 87 cm (unframed) ; 136 x 127.5 x 9 cm (framed)

Purchased, 1883



Liberty & Co. (manufacturer and retailer)

Wedding dress, 1891

Pongee silk, machine and hand-sewn

Printed on interior waist tape: Liberty Costume;

written on woven label sewn inside bodice: G S Cadbury

57 x 22 in. (includes train)

145 x 56 cm (includes train)

Presented by Mrs. Paul Cadbury, 1968



Henry Holiday

Design for a stained glass window for a church

in Portland, OR: *Saint Paul at Athens*, 1910

Pen and ink and watercolor over graphite on paper

23 1/4 x 17 1/8 x 7 7/8 in. (framed) ; 20 1/4 x 10 5/8 in. (unframed)

59 x 43.5 x 20 cm (framed) ; 51.3 x 27 cm (unframed)

Presented by Alfred Holiday



William Frend De Morgan (designer), Merton Abbey Pottery (manufacturer)
 Peacock Vase, ca. 1885
 Earthenware, painted in underglaze colors over white slip
 14 x 12 1/2 in. (width = diameter)
 35.6 x 31.75 cm (width = diameter)
 Presented by Miss Bridget D'Oyly Carte



William Frend De Morgan (designer), Fred Passenger (painter), Sand's End Pottery (manufacturer)

Jar and cover, 1888-98
 Earthenware painted in luster over yellow ground and white slip
 Signed and inscribed on underside: DM 2207
 FULHAM FP 32
 13 x 9 3/8 in. (width = widest diameter)
 33 x 23.8 cm (width = widest diameter)



William Frend De Morgan (designer), Charles Passenger (painter), Sand's End Pottery (manufacturer)
 "Eagle's Supper" dish, 1888-98
 Earthenware, painted in luster over clear glaze over white slip
 Signed and inscribed on underside: W DE M
 FULHAM / CP, 3000 / 14
 x 16 in. (diameter) ; 15 x 16 3/8 x 9 1/2 in. (on mount dimensions)
 x 41.1 cm (diameter) ; 38.1 x 41.6 x 24.1 cm (on



William Frend De Morgan (designer), Craven,
Dunnill & Co. (manufacturer of tile), Merton
Abbey Pottery or Sand's End Pottery
(manufacturer of decoration)

Wall tile, ca. 1880-90

Dust-pressed earthenware. painted in underglaze
colors over white slip

Molded on back: CRAVEN / DUNNILL / & Co. /
JACKFIELD / SALOP / 114

8 x 8 x 1/2 in.

20.3 x 20.3 x 1.27 cm



William Frend De Morgan (designer), Sand's
End Pottery (manufacturer)

Wall tile, 1899-1907

Earthenware, painted in enamel colors and luster
over white slip

Impressed on back: DIP [within a circle] for De
Morgan, Iles and Passenger

6 x 6 x 1/2 in. (tile) ; 6 x 6 x 5 in. (on mount
dimensions)

15.25 x 15.25 x 1.3 cm (tile) ; 15.25 x 15.25 x
12.7 cm (on mount dimensions)



William Arthur Smith Benson (designer), W. A.
S. Benson (manufacturer)

Tea set (water kettle on stand with integral
paraffin burner, teapot, cream jug, sugar bowl,
and tray), ca. 1895

Copper and brass

Kettle lid and tray engraved: FES [owner's
initials]; all pieces except stand marked on base:
BENSON [in a rectangular punch]

11/16 x 15 3/8 x 9 3/16 in. (tray dimensions)

1.8 x 39 x 23.4 cm (tray dimensions)



Edward Burne-Jones (designer), Charles Lumley (cabinetmaker), Osmund Weeks (gesso molder and gilder)

“Garden of the Hesperides” chest, 1887-88

Wood with paint and gold leaf over gesso
41.5 x 74.25 x 27.5 in.

Bequeathed by Helen Mary Gaskell, 1940



Edward Burne-Jones

The Wizard, 1891-98

Oil on canvas

36 5/8 x 21 7/8 in. (unframed) ; 58 1/4 x 41 15/16
x 5 3/8 in. (framed)

93 x 55.5 cm (unframed) ; 148 x 106.5 x 13.7 cm
(framed)

Presented by Sir John Holder, 1912



Edward Burne-Jones

The Holy Grail Tapestries: Study for *The Attainment*, ca. 1890-91

Watercolor and gouache, gum, and gold paint
over traces of graphite on buff paper

20 5/8 x 62 3/4 in. (unframed) ; 31 1/2 x 73 3/4 x
2 1/2 in. (framed)

51.6 x 159.3 cm (unframed) ; 80 x 187.5 x 6.5 cm
(framed)

Presented by Mrs. Gertrude Burney, 1949



William Morris and Edward Burne-Jones, with coworkers at the Kelmscott Press (designers and makers), Kelmscott Press (printer), Joseph Batchelor and Son (manufacturer of paper)
The Works of Geoffrey Chaucer Now Newly Imprinted (The "Kelmscott Chaucer"), 1896
 Bound book with 87 woodcut illustrations on handmade paper
 12 1/2 x 19 x 17 3/4 in. (on mount dimensions)
 26.4 x 54.6 x 45.1 cm (on mount dimensions)
 Presented by Colonel Harold Wilkinson, 1934



Thomas Barnes (designer and maker), Elijah Barnes (designer and maker)
 Flask, ca. 1870
 Lead glass
 8 x 6 1/8 x 3 1/8 in.
 20.5 x 15.5 x 8 cm
 Purchased from Messrs. Barnes, 1870



Thomas Barnes (designer and maker), Elijah Barnes (designer and maker)
 Sweetmeat basket, ca. 1870
 Lead glass
 6 1/2 x 5 1/4 x 4 7/8 in.
 16.5 x 13.5 x 12.4 cm
 Purchased from Messrs. Barnes, 1870



William Holman Hunt

May Morning on Magdalen Tower, 1888-91

Oil on canvas (in original repoussé copper frame designed by William Holman Hunt and manufactured by the Guild of Handicraft, London)

39 3/8 in. (frame diameter) ; 15 1/4 x 19 1/4 in. (unframed)

100 cm (frame diameter) ; 38.8 x 48.8 cm (unframed)

Presented by Mr. and Mrs. Barrow Cadbury,



Charles Robert Ashbee (designer), The Guild of Handicraft (manufacturer)

Butter dish, ca. 1901

Silver with chrysoprases

Sponsor's mark of the Guild of Handicraft, hallmarked for London, 1901-2

3 5/8 x 8 1/8 x 3 1/2 in.

9.1 x 21.2 x 9 cm

Purchased



Charles Robert Ashbee (designer), The Guild of Handicraft (manufacturer)

Cloak clasp, ca. 1901

Silver and enamel

1 7/8 x 6 7/8 x 1/2 in.

4.9 x 17.4 x 1.3 cm

Presented by Mrs. Anne Hull Grundy, 1981



George Frampton (designer and silversmith)
 The Christabel Necklace, 1893-94
 Silver gilt, champlevé enamel, pearls, and opals
 Inscribed on principal pendant: CHRISTABEL;
 signed GF and dated 1893 at lower left
 23 7/8 in. (Diameter of main pendant 3 in.)
 60.8 cm (Diameter of main pendant 7.5 cm)
 Presented by Mrs. Anne Hull Grundy, 1981



Edith Brearey Dawson and Nelson Ethelred
 Dawson (designers and makers)
Amor Mundi, 1895
 Enamel on copper with copper and silver
 mounts
 8 3/4 x 4 1/2 x 2 in.
 22.2 x 11.4 x 5 cm
 Presented by Mrs. Anne Hull Grundy



Edith Brearey Dawson and Nelson Ethelred
 Dawson (designers and makers)
Miles, 1895
 Enamel on copper with silver mounts
 7 x 3 1/8 x 1/4 in.
 17.7 x 8 x 2 cm
 Presented by Mrs. Anne Hull Grundy



Henry Wilson (designer), Henry Wilson with staff and pupils of the Central School of Arts & Crafts, London (silversmiths and enamellers)
The Chamberlain Casket, 1903
Silver, rock crystal, gold, copper, enamel, bronze, semiprecious stones, and wood
22 1/2 x 19 1/2 x 16 3/4 in.
57.1 x 49.5 x 42.5 cm
Bequeathed by Mrs. W. H. Carnegie (formerly Mrs. Joseph Chamberlain)



Edward Spencer and John Bonner (designers), John Bonner and the Artificers' Guild (jewelers)
The Ariadne Necklace, 1905
Gold, silver, silver gilt, enamel, and diamonds
(Chain length 17 1/2 in., pendant drop 1 3/4 in.)
(Chain length 44 cm, pendant drop 4.6 cm)
Presented by Mrs. Anne Hull Grundy



Harry Powell (designer, glass), Edward Spencer and John Bonner (designers, attributed, mounts), James Powell & Sons (glass makers), John Bonner and The Artificers' Guild (silversmiths, attributed)
Decanter, 1905-6
Silver, partly gilded, and glass, garnets, and moonstones
7 1/2 x 5 1/4 x 2 7/8 in.
19.2 x 13.1 x 7.2 cm
Purchased from the Handley-Read Collection



Harry Powell (designer, attributed), James Powell & Sons (manufacturer)
Claret pitcher, 1903-4
Silver and glass
Sponsor's mark of James Powell & Sons, hallmarked for London 1903-4
12 x 3 7/8 x 3 7/8 in.
30 x 10 x 10 cm
Purchased from the Handley-Read Collection with the assistance of the V&A Purchase Grant Fund



Walter Martin (thrower), Edwin Martin (decorator), Martin Brothers Pottery (manufacturer)
Vase, 1890
Stoneware, painted with slips and oxides under lustrous salt glaze
Signed and dated on base: R W Martin Bros / London & Southall 3 – 1890
9 7/8 x 6 3/8 x 6 3/8 in. (approximate height)
24.8 x 16.2 x 16.2 cm (approximate height)
Presented by Drs. J. R. Miller and E. Miller, 1998



Walter Martin (thrower), Robert Wallace Martin (decorator), Martin Brothers Pottery (manufacturer)
Assymetrical jug, 1898
Stoneware, painted with oxides under salt glaze
Signed and dated on base: 3-1898 Martin Bros / London and Southall
9 7/8 x 3 7/8 x 4 5/8 in.
23.3 x 9.9 x 11.8 cm
Presented by Drs. J. R. Miller and E. Miller, 1998



Robert Wallace Martin (designer and modeler),
 Martin Brothers Pottery (manufacturer)
 Jug, 1900
 Stoneware, thrown, modeled, with applied
 elements and painted with oxides under a semi-
 matte salt glaze
 Signed and dated on base: R W Martin & Bros /
 London & Southall, 5 – 1900
 8 x 7 1/4 x 6 1/2 in.
 20.4 x 18.5 x 16.5 cm
 Presented by F. J. Nettlefold



Edmund Elton (designer), Sunflower Pottery
 (manufacturer)
 Pitcher, ca. 1905
 Glazed earthenware
 Brush-marked in green on base: Elton
 9 5/8 x 4 3/4 x 5 7/8 in.
 24.6 x 12 x 15 cm
 Purchased from the Handley-Read Collection



Mary Jane Newill (designer and maker)
Sleepe after Toile (panel 1 of 2), before 1905
 Stained, painted, and leaded glass
 Inscribed : SLEEPE AFTER TOILE; PORT
 AFTER STORMY SEAS / AFTER WARRE;
 DEATHE AFTER LIFE DOTH GREATLY
 PLEASE
 12 3/8 x 24 3/8 in. ; 13 x 49 1/2 x 2 in.
 (dimensions when displayed with 117b)
 31.5 x 62 cm ; 33 x 125.7 x 5.1 cm (dimensions
 when displayed with 117b)



Mary Jane Newill (designer and maker)
Sleepe after Toile (panel 2 of 2), before 1905
 Stained, painted, and leaded glass
 Inscribed at bottom edge: SLEEPE AFTER
 TOILE; PORT AFTER STORMY SEAS / AFTER
 WARRE; DEATHE AFTER LIFE DOTH
 GREATLY PLEASE
 12 3/8 x 24 3/8 in. ; 13 x 49 1/2 x 2 in.
 (dimensions when displayed with 117a)
 31.5 x 62 cm ; 33 x 125.73 x 5.1 cm (dimensions
 when displayed with 117a)



Joseph Southall
Sigismonda (or *Gismonda*), 1897
 Tempera on linen
 23 x 17 in. (unframed) ; 32 1/4 x 26 1/2 x 2 in.
 (framed)
 58.5 x 43 cm (unframed) ; 82 x 67.3 x 5 cm
 (framed)
 Bequeathed by the artist's wife, Anna Elizabeth
 Southall, in memory of her husband, 1948



Joseph Southall
New Lamps for Old, 1900-1
 Tempera on linen (in original frame gilded by
 Anna Elizabeth Baker)
 38 x 29 1/2 in. (unframed) ; 46 1/4 x 37 15/16 x 2
 15/16 in. (framed)
 96.5 x 74.7 cm (unframed) ; 117.5 x 96.3 x 7.5
 cm (framed)
 Presented by Jeanne and Angela Heaton, 1952



John Paul Cooper (designer and maker)
Fruit dish, 1907
Silver, rock crystal, and citrines
6 3/4 x 7 x 7 in.
17.3 x 17.8 x 17.8 cm
Purchased from the silversmith Francis Cooper,
John Paul's son, following his father's death, and
presented by the Friends of Birmingham
Museums Trust



Arthur Stansfield Dixon (designer, attributed),
Birmingham Guild of Handicraft (manufacturer)
Inkwell, 1903-4
Silver and glass
Sponsor's mark of Birmingham Guild of
Handicraft, hallmarked for Birmingham 1903-4
2 3/4 x 4 3/4 x 4 5/8 in.
7.1 x 12.1 x 11.9 cm
Presented by Mr. & Mrs. John Cox



Anne Grisdale Stubbs (designer, attributed),
Jesson, Birkett & Co. (manufacturer)

Cigarette box, ca. 1905
Copper and enamel lined with cedar wood
Stamped on base: JB Co [in monogram]
2 1/8 x 7 5/8 x 5 5/8 in.
5.4 x 20 x 14.4 cm
Bequeathed by the furniture maker Hugh
Birkett, Thomas and Anne's son



Birmingham Guild of Handicraft (silversmiths)

Waist clasp, 1898-99

Silver

3 x 6 1/4 x 1/4 in.

7.7 x 16 x .7 cm

Presented by Mrs. Anne Hull Grundy, 1981



A. E. Jones (manufacturer)

Waist clasp, 1902-3

Silver with chrysoprases

Sponsor's mark of A. E. Jones, hallmarked for
Birmingham 1902-3

2 1/2 x 4 7/8 x 3/8 in.

6.3 x 10.6 x 1 cm

Presented by Mrs. Anne Hull Grundy, 1981



Oliver Baker (designer), W. H. Haseler & Co.
(manufacturer), Liberty & Co. (retailer)

Waist clasp, 1902-3

Silver with turquoises

Sponsor's mark of Liberty & Co., hallmarked for
Birmingham, 1902-3

2 1/8 x 4 1/8 x 1/2 in.

5.5 x 10.5 x 1.2 cm

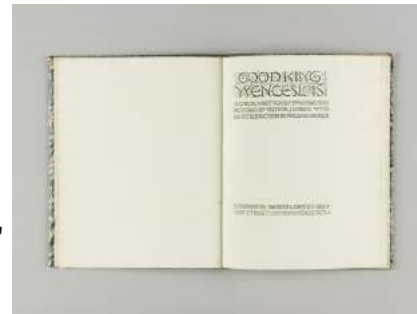
Presented by Mrs. Anne Hull Grundy, 1981



Cornish Brothers (printer)
The Quest, nos. 1-3, 1894-95
 Printed periodicals in paper wrappers; later
 bound in two volumes
 9 1/4 x 7 1/4 in. (closed)
 23.5 x 18.5 cm (closed)
 Acquired by 2004



Arthur Joseph Gaskin (designer), Georgie Evelyn
 Cave Gaskin (designer of title page), Cornish
 Brothers (publisher)
Good King Wenceslas: A Carol, 1895
 Bound book
 12 x 9 1/8 x 1/2 in. (closed)
 28.7 x 23.2 x 1.2 cm (closed)
 Presented by Mrs. Margaret Dennery, the artists'
 daughter, 1986.



Arthur Joseph Gaskin
Kilhwych the King's Son, 1901
 Tempera on wood with gold leaf over raised and
 tooled gesso
 21 1/4 x 13 1/8 in. (unframed) ; 31 7/8 x 23 7/16
 x 3 1/8 in. (framed)
 53.8 x 33.3 cm (unframed) ; 81 x 59.5 x 8 cm
 (framed)
 Presented anonymously, 1914



Arthur Joseph Gaskin

Fiammetta (Portrait of Georgie Gaskin), 1898

Tempera on wood

17 5/8 x 8 5/8 in. (unframed) ; 41 1/2 x 29 x 2 in.
(framed)

44.7 x 20.7 cm (unframed) ; 105.3 x 73.5 x 5 cm
(framed)

Purchased, 1989



Arthur Joseph Gaskin

Fiammetta (Portrait of Georgie Gaskin), 1913

Enamel on copper framed in silver with gold
wire

2 3/8 x 1 3/8 x 1/4 in.

6 x 3.6 x .7 cm

Purchased, 1990



Georgie Evelyn Cave Gaskin (designer), Arthur
Joseph Gaskin, Georgie Evelyn Cave Gaskin, and
assistants (jewelers)

Necklace, 1907

Silver, moonstone, chrysoprases, pearls, and
mother-of-pearl

4 1/2 x 3 x 4 1/2 in. (dimensions on mount.
length of chain 16 5/8, pendant drop 3 in.)

11.43 x 7.62 x 11.43 cm (dimensions on mount.
length of chain 42.2, pendant drop 7.6 cm)

Presented by Mrs. Anne Hull Grundy, 1981



Arthur Joseph Gaskin (designer), William Thomas Blackband (enameler), Charles Thomas (modeler of the finial), Bernard Cuzner (embosser)

The Collings Casket, 1910-11

Silver, enamel, mother-of-pearl, steel, and gold
Embossed around skirt: PRESENTED TO THE
RIGHT HONOURABLE JESSE COLLINGS MP
WITH THE HONORARY FREEDOM OF THE
CITY OF BIRMINGHAM 13TH JUNE 1911
9 1/2 x 6 1/4 x 12 3/8 in.



Kate Bunce

Musica, ca. 1895-97

Oil on canvas

40 3/16 x 30 3/16 x 1 3/4 in. (framed) ; 30 x 20
in. (unframed)

102 x 76.7 x 4.5 cm (framed) ; 76.3 x 51 cm
(unframed)

Presented by Sir John Holder, 1897



Kate Bunce

The Keepsake, exhibited 1901

Tempera on canvas (in original frame inset with
metal panels by Myra Bunce)

32 x 19 1/2 in. (unframed) ; 41 7/16 x 28 15/16 x
2 in. (framed)

81.3 x 49.5 cm (unframed) ; 105.3 x 73.5 x 5 cm
(framed)

Bequeathed by the artist, 1928



Fanny Bunn (designer and enameler)

The Victor, 1904

Enamel on copper

12 1/8 x 8 7/8 x 1 3/8 in.

30.9 x 22.4 x 3.6 cm

Presented by Mrs. Anne Hull Grundy



May Bunting (designer and enameler)

Portrait of Offlow Scattergood, 1908

Enamel on copper

18 1/2 x 13 1/2 x 1 in. (framed) ; 18 1/2 x 13 1/2 x 8 1/2 in.

46.8 x 34.29 x 2.5 cm (framed) ; 46.8 x 34.29 x 21.59 cm

Presented by Mrs. Anne Hull Grundy



Sydney Harold Meteyard

Hope Comforting Love in Bondage, 1901

Oil on canvas

41 x 43 in. ; 57 1/2 x 59 5/16 x 3 15/16 in. (framed)

104.2 x 109.2 cm ; 146 x 150.7 x 10 cm (framed)

Presented by the artist's brother Mr. O. E. Meteyard, 1948



Maxwell Armfield

*Where the Silence is More than All Tunes,
Where Sleep Overflows from the Heart*, 1902

Watercolor and gouache with gum arabic on
artist's board surfaced with Whatman paper
11 1/2 x 5 1/8 in. (unframed) ; 23 1/4 x 17 1/8 x 7
7/8 in. (framed)

28.2 x 13 cm (unframed) ; 59 x 43.5 x 20 cm
(framed)

Purchased with the assistance of the Public
Picture Gallery Fund and the V&A Purchase



John Dickson Batten

Beauty and the Beast, 1904

Tempera on canvas

26 x 30 1/2 in. (unframed) ; 39 3/8 x 40 9/16 x 7
in. (framed)

66 x 77.5 cm (unframed) ; 100 x 103 x 17.78 cm
(framed)

Presented by the John Feeney Bequest Fund,
1936



Mary Jane Newill (designer, maker,
embroiderer)

Bedcover, ca. 1908

Linen embroidered with colored wools

90 1/2 x 92 1/2 in.

230 x 235 cm (mount: slightly narrower than
twin size bed)

Purchased with the assistance of the V&A
Purchase Grant Fund



Ella Lee Deakin Moore (designer, dressmaker, and embroiderer)

Girl's dress, ca. 1897-1912

Linen, hand-sewn and embroidered in colored wools, with stem stitch, satin stitch, and chain stitch and drawn thread work

61 1/2 x 15 x 15 in. (approximate dimensions on mannequin)

156.21 x 38.1 x 38.1 cm (approximate dimensions on mannequin)

Presented by Miss J. E. Moore, 1992



Gwendoline Kate Lewis (designer, maker, embroiderer)

Purse, ca. 1897-1906

Silk embroidered with silk threads, metal frame and chain

11 x 7 in. (length includes chain handle) ; 3 3/4 x 8 x 11 1/4 in. (on mount dimensions)

27.9 x 18 cm (length includes chain handle) ;

9.53 x 20.3 x 28.6 cm (on mount dimensions)

Lent by Birmingham Museums Trust on behalf of a Private Lender



Henry Albert Payne

Choosing the Red and White Roses in the Temple Gardens, 1908-10

Watercolor with gouache and gold paint on paper

19 3/4 x 21 7/8 in. (unframed) ; 30 x 30 5/8 x 1 5/8 in. (framed)

50.2 x 55.5 cm (unframed) ; 76.3 x 77.9 x 4.1 cm (framed)

Presented by Sir John Holder, 1913



Florence Jane Camm (designer), T. W. Camm & Co. (manufacturer)

Dante and Beatrice: The Wedding Feast, 1910

Stained, painted, and leaded glass

58 5/8 x 24 3/8 in.

149 x 62 cm

Transferred from Staffordshire Museums Service,
1988

