



# 2018 ANNUAL REPORT

# N

NEVADA MUSEUM OF  
ART

Donald W. Reynolds Center for the Visual Arts | E. L. Wiegand Gallery

# 2017–2018

## MUSEUM LEADERSHIP

### BOARD OF TRUSTEES EXECUTIVE COMMITTEE

#### CHAIR

Barbara Danz, *Law (retired)*

#### CHAIR-ELECT/TREASURER

John C. Deane, *The Alta Group*

#### SECRETARY/CHAIR-ELECT

Charlotte McConnell, *Community Representative*

Kathie Bartlett, *Oliver Luxury Real Estate*

Peter Bessette, *RBC Wealth Management*

Doug Brewer, *Merrill Lynch*

Nancy Fennell, *Dickson Realty*

Kristi Overgaard, *Switch*

Wayne Prim, *Finance/Investment*

Garrett Sutton, *Sutton Law Center*

David Walker, *CEO*

### TRUSTEES

Be-Be Adams, *Barrick Gold*

Carole K. Anderson, *Community Representative*

Denise Cashman, *Community Representative*

Kathleen Conaboy, *McDonald Carano*

Catherine Farahi, *Community Representative*

Susan Fountain, *Via Council President*

Valerie Glenn, *The Glenn Group*

Heather Goldman, *Capstak, Inc.*

Jeremy Higginbotham, *Tesla / SpaceX*

Mimi Ellis Hogan, *Community Representative*

Brian Kennedy, *Argonaut, LLC*

Anne Brockinton Lee, *Community Representative*

Alan Maiss, *Alpine Associates Management Inc.*

Lisa Mead, *Reno Orthopaedic*

Janet Mello, *The Private Bank by Nevada State Bank*

Maureen Mullarkey, *Finance/Investment*

Peter E. Pool, *Community Representative*

Suzanne Abbott Silverman, *First Centennial Title Co.*

Piper Stremmel, *PTP Properties/Freelance Writer*

### HONORARY LIFE TRUSTEES

Kristen A. Avansino

Raymond C. Avansino, Jr.

Bruno Benna

Edna Benna

Carol Franc Buck

John H. O. La Gatta

Charles N. Mathewson

Peter E. Pool

Wayne L. Prim

Fred W. Smith

Jan A. Tarble

## NOTABLE

### AFTER **THREE** YEARS OF ENGINEERING DEVELOPMENT,

*Orbital Reflector* by Trevor Paglen launched from Vandenberg Air Force Base aboard a SpaceX Falcon 9 rocket on December 3. An important icon for STEAM education, the project truly epitomized the interdisciplinary connections between the fields of science, technology, engineering, arts, and mathematics, and provides a long-term framework for educators developing cross-disciplinary practices in the K-12 classroom.



### **250** PHOTOGRAPHS WERE ON VIEW AS PART OF ANNE BRIGMAN: A VISIONARY IN MODERN PHOTOGRAPHY

The loans were from renowned photography collector Michael Wilson as well as the Metropolitan Museum of Art, J. Paul Getty Museum, and the George Eastman Museum.

This first-ever retrospective of Brigman's legacy garnered international acclaim.



## NOTABLE

### **THREE** EXHIBITIONS DEVELOPED BY THE MUSEUM'S CURATORS TOURED NATIONALLY AND INTERNATIONALLY:

*Unsettled* traveled to Anchorage Museum, Alaska and Palm Springs Art Museum, California.

*Marking the Infinite: Contemporary Women Artists from Aboriginal Australia* traveled to The Phillips Collection, Washington D.C. and the Museum of Anthropology at the University of British Columbia in Vancouver, Canada

*City of Dust: The Evolution of Burning Man* traveled to The Renwick Gallery, Smithsonian American Art Museum, Washington D.C.

### **730,000** GUESTS

viewed *City of Dust: The Evolution of Burning Man* during its presentation at the Renwick Gallery, Smithsonian American Art Museum, Washington D.C.



### **3,000** GUESTS GATHERED FOR REAWAKENING THE GREAT BASIN

This free community event celebrated Native American Great Basin cultures through art, dance, theater, storytelling, music, food and hands-on projects. The event was co-produced by the Reno-Sparks Indian Colony.



## NOTABLE

**\$100,000** IN  
SUPPORT FOR MARKING  
THE INFINITE WAS PROVIDED  
BY MEMBERS OF THE  
COLLECTIONS COMMITTEE



**NEVADA'S 30<sup>TH</sup> GOVERNOR, BRIAN SANDOVAL,**  
was honored at a gala dinner celebrating Hans Meyer-Kassel,  
an artist known for his scenic images of northern Nevada.  
During his tenure, Governor Sandoval championed several  
significant Museum projects including the ongoing STEAM  
education initiative.



**SIX NEW ARCHIVES AND  
349 LIBRARY BOOKS WERE ACQUIRED  
BY THE CENTER FOR ART + ENVIRONMENT**

Acquisitions included an extensive photo archive by early  
Land Art projects photographer Gianfranco Gorgoni,  
as well as a rare first edition of *Scott's Last Expedition*  
published in 1913. The book was purchased with funds  
provided by the Volunteers in Art (VIA).

**FIRST POOL RESEARCH FELLOW**

Melissa Melero-Moose, contemporary Northern Paiute artist  
and founding director of the Great Basin Native Artists,  
was named the inaugural Pool Research Fellow for the  
Center for Art + Environment. The fellowship is funded by  
Lifetime Trustee Peter E. Pool.



## NOTABLE



### AN AWARD WINNING BOX-SET COMMEMORATED ANNE BRIGHMAN: A VISIONARY IN MODERN PHOTOGRAPHY

The publication was produced by the Museum and Rizzoli Electra along with a reprint of Brighman's 1949 breathtaking book of poetry, *Songs of a Pagan*.



### 5 AWARDS: UNSETTLED

The catalogue for *Unsettled* won numerous prestigious design awards including: The Frances Smyth-Ravenel Prize for Excellence in Publication Design from the American Alliance of Museums (AAM); AIGA and Design Observer's juried "50 Books 50 Covers" competition; Communication Art's 2018 Design Annual Competition; Bronze Award from Ad Directors Club; the Gold Award from Graphis and the Regional Winner of the 2018 Print Regional Design Awards.

# STATEWIDE EXPANSION



## ART MUSEUM AT SYMPHONY PARK (AMSP) MERGED WITH THE NEVADA MUSEUM OF ART

After many years of collaborative discussion and with a shared vision to establish an art museum in Las Vegas, Art Museum at Symphony Park (AMSP) merged with the Nevada Museum of Art to form a statewide organization and Board of Trustees. The Las Vegas City Council agreed to assign the assets previously committed to AMSP to the merged entity, allowing for continued planning in Symphony Park.

## \$1 MILLION APPROPRIATED IN SB 187

The Museum successfully matched and drew down the \$1 million appropriated in SB 187 from the 2017 legislative session. These funds were used to support statewide expansion efforts.



## 312,000 GUESTS VISITED UGO RONDINONE'S SEVEN MAGIC MOUNTAINS IN LAS VEGAS

The statistic was compiled by the Bureau of Land Management.



# COMPLETE LIST OF 2018 EXHIBITIONS

## **History of Transportation:**

A Mural Study by Helen Lundeborg

January 20, 2018 – October 1, 2019

## **The Nuclear Landscape**

January 20, 2018 – October 28, 2018

## **Art of the Greater West**

January 20, 2018 – April 21, 2019

## **The Scholastic Art Awards 2018**

February 2, 2018– March 4, 2018

## **Marking the Infinite:**

Contemporary Women Artists  
from Aboriginal Australia

February 17, 2018 – May 13, 2018

## **The Body of a House:**

Paintings by Robert Beckmann

February 24, 2018 – April 1, 2018

## **Hans Meyer-Kassel:**

Artist of Nevada

February 24, 2018 – September 2, 2018

## **Enrique Chagoya:**

Reimagining the New World

March 3, 2018 – July 8, 2018

## **Randolph Sims:**

On the Spur of the Moment

March 3, 2018 – July 15, 2018



↑ James Turrell, *Roden Crater*

## **James Turrell:**

*Roden Crater*

March 10, 2018 – January 6, 2019

## **Celebrating Israel's 70th Anniversary**

Michal Rovner and Tal Shochat

April 13, 2018 – October 28, 2018

## **BLOOM:**

Ken Goldberg, Sanjay Krishnan,  
Fernanda Viégas and  
Martin Wattenberg

May 4, 2018 – July 31, 2019

## **Manet to Maya Lin**

June 9, 2018 – September 2, 2018

## **Judith Belzer: The Panama Project**

July 21, 2018 – November 11, 2018

## **The Lasting World:**

Simon Dinnerstein and  
The Fulbright Triptych

July 21, 2018 – January 6, 2019

## **Bethany Laranda Wood:**

*The West at Hand*

September 17, 2018 – March 3, 2019

## **Laid Bare in the Landscape**

September 29, 2018 – January 27, 2019

## **Anne Brigman:**

*A Visionary in Modern Photography*

September 29, 2018 – January 27, 2019

## **Paul Valadez:**

*Selections from the Great  
Mexican-American Songbook*

November 10, 2018 – April 21, 2019

## **After Audubon:**

*Art, Observation, and  
Natural Science*

November 10, 2018 – April 21, 2019



# ACQUISITIONS + COLLECTIONS

## GIFTS

### Edgar Ewing, *Untitled*

(from *The Las Vegas series*), 1966-67

Oil on canvas, 40 1/2 x 45 1/4 in.

GIFT OF SUSAN RICE LEWIS

### Joan Myers, *The Cave*, negative 1977/print 1979

Toned and hand-colored gelatin silver print,  
from paper negative, 15 1/2 x 15 1/2 in.

GIFT OF THE ARTIST

### Joan Myers, *S*, negative 1977/print 1979

Toned and hand-colored gelatin silver print,  
from paper negative, 19 1/2 x 15 1/2 in.

GIFT OF THE ARTIST

### Joan Myers, *Seawall*, negative 1977/print 1979

Toned and hand-colored gelatin silver print,  
from paper negative, 16 x 19 1/2 in.

GIFT OF THE ARTIST

### Wolfgang Tillmans, *Morning*, 2009

C-print, 12 x 16 in., edition of 10, 1 AP

GIFT OF HEATHER HARMON

## GIFTS TO THE CENTER FOR ART + ENVIRONMENT ARCHIVE COLLECTIONS

### The Honeymoon Miralda Project

GIFT OF ROBIN GREENSPUN

### David Maisel: Proving Ground

GIFT OF DAVID MAISEL

### Susanna Battin: Key Observation Point

GIFT OF SUSANNA BATTIN

### Gianfranco Gorgoni: Land Art Photographs

GIFT OF GIANFRANCO GORGONI

### Bill Stapleton: Burning Man, A Slice of Life

TRANSFER OF PROPERTY FROM THE SECOND  
JUDICIAL DISTRICT COURT OF THE STATE OF NEVADA

### Bruce Licher: Stamping Antarctica

GIFT OF BRUCE LICHER

## PURCHASES

### Laura Aguilar, *Nature Self Portrait #2*, 1996

Gelatin silver print, 16 x 20 in.

THE ROBERT S. AND DOROTHY J. KEYSER

ART OF THE GREATER WEST COLLECTION FUND

### Laura Aguilar, *Untitled #111*,

from the series *Grounded*, 2006

Ink jet print, 17 x 22 in.

THE ROBERT S. AND DOROTHY J. KEYSER

ART OF THE GREATER WEST COLLECTION FUND

### Lita Albuquerque, *Malibu Line*, 1978/printed 2014

Digital pigment print

THE ALTERED LANDSCAPE,

CAROL FRANC BUCK COLLECTION

### Lita Albuquerque, *Moon Shadow*,

1978/printed 2014

Digital pigment print

THE ALTERED LANDSCAPE,

CAROL FRANC BUCK COLLECTION

### Lita Albuquerque, *Man in the Mountain 2*,

1979/printed 2014

Digital pigment print

THE ALTERED LANDSCAPE,

CAROL FRANC BUCK COLLECTION

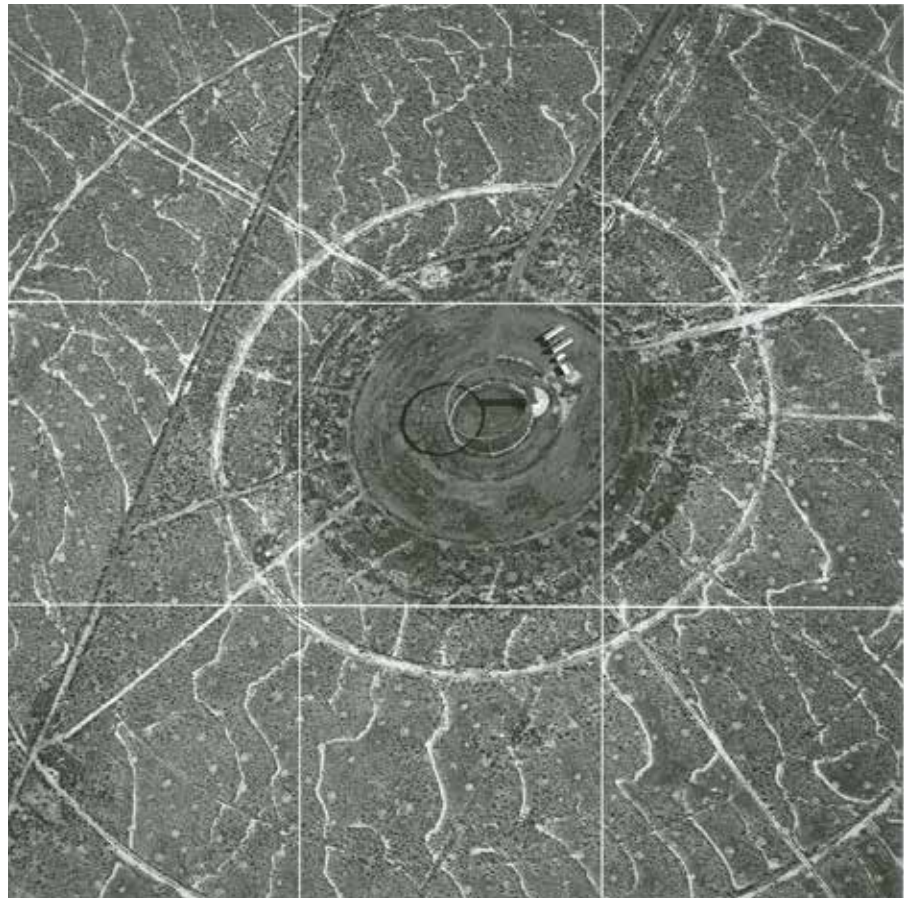
### Lita Albuquerque, *Spine of the Earth*,

1980/printed 2014

Digital pigment print

THE ALTERED LANDSCAPE,

CAROL FRANC BUCK COLLECTION



↑ David Maisel, *West Vertical Grid\_04*

# ACQUISITIONS + COLLECTIONS

**Lita Albuquerque**, *Rock and Pigment*,  
1978/printed 2014

Digital pigment print

THE ALTERED LANDSCAPE,

CAROL FRANC BUCK COLLECTION

**Ben Aleck**, *Captain Jack/Stronghold*, not dated  
Oil on board

THE ROBERT S. AND DOROTHY J. KEYSER

ART OF THE GREATER WEST COLLECTION FUND

**Manuel Alvarez Bravo**, *Aztec Artifacts*, 1930s–1940s

Twelve gelatin silver prints, 9 1/2 x 7 1/2 in. each

THE ROBERT S. AND DOROTHY J. KEYSER

ART OF THE GREATER WEST COLLECTION FUND

**Dean Byington**, *Colossus 1*, 2018

Oil, mixed media on linen, 40 x 35 in.

THE ROBERT S. AND DOROTHY J. KEYSER

ART OF THE GREATER WEST COLLECTION FUND

**Enrique Chagoya**, *Illegal Alien's Guide to  
Somewhere Over the Rainbow*, 2010

Color lithograph with chine-collé,  
edition 1/30, 24 3/4 x 40 3/4 in.

THE ROBERT S. AND DOROTHY J. KEYSER

ART OF THE GREATER WEST COLLECTION FUND

**Judy Chicago**, *Woman and Smoke*, 1971-72

Archival film, running time: 15 minutes,  
13 seconds, edition of 6 + 2 AP

THE ROBERT S. AND DOROTHY J. KEYSER

ART OF THE GREATER WEST COLLECTION FUND

**Kevin Cooley**, *Carrizo Plain Super Bloom*, from  
the series *Still Burning*, 2017

Archival inkjet print, 41 x 51 1/2 in.

THE ROBERT S. AND DOROTHY J. KEYSER

ART OF THE GREATER WEST COLLECTION FUND

**Judy Dater**, *Imogen and Twinka at Yosemite*, 1974

Archival pigment print, no edition (only 2 as  
archival pigment), 13 1/2 x 10 1/2 in.

THE ROBERT S. AND DOROTHY J. KEYSER

ART OF THE GREATER WEST COLLECTION FUND



↑ Judy Chicago, *Woman and Smoke*, 1971-72

**Judy Dater**, *Self Portrait with Stone*, 1981

Gelatin silver print, 14 1/2 x 18 3/8 in.

THE ROBERT S. AND DOROTHY J. KEYSER

ART OF THE GREATER WEST COLLECTION FUND

**Judy Dater**, *Self Portrait with Snake Petroglyph*, 1981

Archival pigment print, edition 1/5, 43 1/2 x 34 in.

THE ROBERT S. AND DOROTHY J. KEYSER

ART OF THE GREATER WEST COLLECTION FUND

**Wilson Díaz**, *Scientific, Colonial and Indigenous  
Names of the Coca Plant*, 2004-17

Pencil and seed pulp of coca plant, Diptych,  
edition 5/6, 40 1/8 x 28 3/8 in.

THE ROBERT S. AND DOROTHY J. KEYSER

ART OF THE GREATER WEST COLLECTION FUND

**Wilson Díaz**, **Amy Franceschini and Renny  
Pritikin**, *Illustration for the publication Movement  
of the Liberation of the Coca Plant*, 2009-17

Coca wood charcoal, ink made from avocado  
seed and graphite, triptych, 19 3/4 x 13 3/4 in.

THE ROBERT S. AND DOROTHY J. KEYSER

ART OF THE GREATER WEST COLLECTION FUND

**Al Farrow**, *Classic Mimbres Black-on-White, Style  
IV*, ca. late 20th century, *Mushroom Clouds Over  
the Pueblos*, from the *Mimbres* series, 1993

Polyester resin with clay filler and paint,  
3 3/4 x 10 in. diameter

MUSEUM PURCHASE AND PARTIAL GIFT OF

TIMOTHY ANGLIN BURGARD AND GERALDINE KOVATS  
IN HONOR OF AL FARROW

**Regina José Galindo**, *Tierra*, 2013

Lambda print on Dibond, 35 x 53 in.

THE ALTERED LANDSCAPE,

CAROL FRANC BUCK COLLECTION

**Flor Garduño**, *Magueyes*, 1986

Gelatin silver print, 16 x 20 in.

THE ROBERT S. AND DOROTHY J. KEYSER

ART OF THE GREATER WEST COLLECTION FUND

**Jean LaMarr**, *Some Kind of Buckaroo*, 1990

Screenprint, 26 x 38 in.

THE ROBERT S. AND DOROTHY J. KEYSER

ART OF THE GREATER WEST COLLECTION FUND

# ACQUISITIONS + COLLECTIONS

**Ana Mendieta, *Burial Pyramid*, 1974**

(Estate print 2010)

Suite of five estate color photographs,  
16 x 20 in. each, edition 7/10

THE ROBERT S. AND DOROTHY J. KEYSER

ART OF THE GREATER WEST COLLECTION FUND

**Karin Apollonia Müller, *Citylights #2*, 2012**

Chromogenic print. 28 x 64 in.

THE ALTERED LANDSCAPE,

CAROL FRANC BUCK COLLECTION

**Karin Apollonia Müller, *Citylights #3*, 2012**

Chromogenic print, 28 x 64 in.

THE ALTERED LANDSCAPE,

CAROL FRANC BUCK COLLECTION

**Karin Apollonia Müller, *Citylights #8*, 2012**

THE ALTERED LANDSCAPE,

CAROL FRANC BUCK COLLECTION

**Steve Nighthawk, *Wapashone*, not dated**

Pen, pencil and pastel on paper, 28 x 40 in.

THE ROBERT S. AND DOROTHY J. KEYSER

ART OF THE GREATER WEST COLLECTION FUND

**Optics Division of the Metabolic Studio (Lauren**

**Bon, Richard Nielsen, and Tristan Duke),**

*Bubblers, Owens Dry Lake Bed*, June 2013

Gelatin silver developed liminal print,

147 x 42 ½ in.

THE ROBERT S. AND DOROTHY J. KEYSER

ART OF THE GREATER WEST COLLECTION FUND

**Cara Romero, *Oil Boom***

Archival pigment print, edition of 5, 40 x 40 in.

THE ROBERT S. AND DOROTHY J. KEYSER

ART OF THE GREATER WEST COLLECTION FUND

**Cara Romero, *Sheridan (reclining Chemehuevi***

*Woman in White Clay)*, 2017

Archival pigment print, edition of 7, 24 x 36 in.

THE ROBERT S. AND DOROTHY J. KEYSER

ART OF THE GREATER WEST COLLECTION FUND

**Cara Romero, *TV Indians***

Archival pigment print, edition of 7

THE ROBERT S. AND DOROTHY J. KEYSER

ART OF THE GREATER WEST COLLECTION FUND

**Michal Rovner, *Untitled 7 (Panorama)*, 2015**

LCD screen, paper and video

23 1/4 x 40 13/16 x 2 9/16 inches

COLLECTION OF THE NEVADA MUSEUM OF ART,

MUSEUM PURCHASE WITH FUNDS PROVIDED BY

Atlantis Casino Resort Spa/Catherine and John Farahi,

Anonymous, John and Carol Ann Badwick, Susan Baker,

Wawona Foundation, Crystal Family Foundation, Nancy

Flanigan, Heidi Allyn Loeb, Mary Catherine and Ken

Pierson, Sandy Raffaealli/Bill Pearce Motors, Suzanne

Silverman and Dennis Dworkin, Iris and Mark Frank, Mimi

Ellis-Hogan, Sharon and Gary Jacobson, Hy Kashenberg,

Gary Lieberthal, Cary Lurie, Nancy and Alan Maiss, Jacob

Margolis, Leslie and Steve Pansky, Joan and Michael Pokroy,

Jean Venneman and YaYa Jacoby, Darby and David Walker

**Carolee Schneeman, *Nude on Tracks*,**

*Parallel Axis*, 1975

Gelatin silver print, 10 x 8 in.

THE ALTERED LANDSCAPE,

CAROL FRANC BUCK COLLECTION

**Tal Shochat, *Red Apple*, 2017**

C-prints, triptych, 39 1/8 x 44 in. each

MUSEUM PURCHASE

**Jo Spence (in collaboration with Terry Dennett),**

*Remodelling Photo History:*

*Industrialization*, 1981-1982

Gelatin silver print, 19 7/8 x 15 7/8 in.

THE ALTERED LANDSCAPE,

CAROL FRANC BUCK COLLECTION

**Jo Spence (in collaboration with Terry Dennett),**

*Remodelling Photo History:*

*Industrialization*, 1981-1982

Gelatin silver print, 20 x 16 in.

THE ALTERED LANDSCAPE,

CAROL FRANC BUCK COLLECTION

**Will Wilson, *A/R 2*, 2004**

Archival pigment print, edition of 3  
and AP, 44 x 70 in.

THE ROBERT S. AND DOROTHY J. KEYSER

ART OF THE GREATER WEST COLLECTION FUND



↑ Cara Romero, *TV Indians*



# OUTREACH HIGHLIGHTS



## **200** EDUCATORS FROM THROUGHOUT NEVADA ATTENDED THE INAUGURAL NV STEAM CONFERENCE

This program was endorsed by the Nevada Department of Education and Governor Sandoval, who officially declared the day of the conference “Nevada STEAM Day.” The event was organized in partnership with Desert Research Institute with lead sponsorship by Tesla.

## **681** TEENS PARTICIPATED IN TEEN ART NIGHT PRESENTED IN PARTNERSHIP WITH THE HOLLAND PROJECT

Participants rode in a multi-stop bike circuit featuring art installations, performances and interactions.



## **1,846** STUDENTS ENROLLED IN 244 COURSES OFFERED BY THE THE E.L. CORD MUSEUM SCHOOL

More than \$4,000 in scholarships were awarded to 27 E. L. Cord Museum School students expressing financial need.

# OUTREACH HIGHLIGHTS

## 25 HIGH SCHOOL STUDENTS LAUNCHED TEEN OPEN STUDIO

including an afterschool series that introduced a variety of studio techniques and practices and culminated in a month-long exhibition at the Holland Project.



## MORE THAN 600 GUESTS

experienced an incredible suite of programming related to *Anne Brigman: A Visionary in Modern Photography*, including a symposium featuring the catalogue essayists, a hike through Tahoe-Donner, and a one-woman theatrical production that brought Brigman's poetry to life.



## HANDS ON! SECOND SATURDAYS

The Thomas P. Raley Foundation became the Lead Sponsor of Hands ON! Second Saturdays. This support helps the Museum offer free admission to everyone on the second Saturday of every month.

## MORE THAN 8,500 PRESCHOOL TO COLLEGE-AGE STUDENTS ATTENDED THE REVAMPED SCHOOL TOURS PROGRAM

Museum educators delivered pioneering STEAM-based content to teachers that included pre-lessons and post-lessons, extending museum learning into the classroom. The tours meet all standards for art education set by the Nevada Department of Education.



## IN THE NEWS

**3,881** STORIES MENTIONING THE MUSEUM WERE PUBLISHED IN 2018 — 1,996 MORE STORIES THAN 2017.



### FEATURED IN THE NEW YORK TIMES

BY REBECCA KLEINMAN, 12/26/2018

PRINT: In the Sierra Nevadas, Baring Body and Soul

ONLINE: A Pioneering Photographer, Bare in the Back Country

*"But an undeniable tough bohemian verve is on display, drunk on willed freedom, along with a strong sense of composition and a deep reverence for the landscapes of the West."*

— Year's Best Photography Books by Luc Sante,  
New York Times Book Review, 11/28/2018

### UNSETTLED WAS RECOGNIZED AMONG THE BEST OF 2018

BY HYPERALLERGIC MAGAZINE 12/20/2018

### TOP 5 ONLINE ARTICLES:

CNET.COM (ES) SPANISH | August 6, 2018

Orbital Reflector – Reach 70M

CNET.COM ENGLISH | August 6, 2018

Orbital Reflector – Reach 68M

BBC NEWS – INDONESIA | December 28, 2018

Orbital Reflector – Reach 65M

THE GUARDIAN | November 25, 2018

Orbital Reflector – Reach 46M

FORBES | January 30, 2018

Museum Mention – Reach 43M

**4,006** SOCIAL MEDIA POSTS  
MENTIONED THE MUSEUM



Facebook

TOTAL  
REACH **1,716,184**

Top: Posted by Inquirer.net (November 14, 2018)  
Discussing Orbital Reflector — Reach 5M



Twitter

TOTAL  
REACH **572,378**

Top: Posted by Saatchi Gallery @saatchi\_gallery  
(March 23, 2018) Discussing Seven Magic Mountains  
— Reach 3M



Instagram

TOTAL  
REACH **572,378**

Top: 665 Likes, 6,205 Reach and 7,348 Impressions



## SUPPORT AND UPPER LEVEL DONOR ACTIVITIES



**557** BACKERS ON KICKSTARTER  
CONTRIBUTED \$76,053 TO THE LAUNCH  
OF TREVOR PAGLEN: ORBITAL REFLECTOR

### SCHOLASTIC ART AWARDS

Bank of America (BoFA) once again served as a top sponsor of the annual Scholastic Art Awards program for \$25,000. BoFA also reinstated the popular Museums on Us program, providing \$5,000 for Bank of America, Merrill Lynch and U.S. Trust credit and debit cardholders to access free general admission on the first full weekend (Saturday and Sunday) of every month.



### **112** ACTIVE VOLUNTEERS—

including 30 new volunteers—provided 6,135 hours of their time to the Museum, at an in-kind value of \$156,013.

With the proceeds from the 38th annual Arts and Flowers luncheon, held at the Atlantis Resort Casino Spa, the Volunteers in Art Council helped to underwrite *The Contact: Quilts of the Sierra Nevada* by Ann Johnston and supported volunteer appreciation events and the December holiday party.



## SUPPORT AND UPPER LEVEL DONOR ACTIVITIES

### CUMMULATIVE GIFTS OF **\$25,000** AND ABOVE ARE RECOGNIZED ON THE NEW DIGITAL DONOR WALL

Technology and construction  
were generously funded by the  
Estelle J. Kelsey Foundation.



### **1,000s** OF FLOWERS SERVED AS A BACKDROP TO MRS. MEYER KASSEL'S HIGH TEA HOSTED BY LONGTIME MEMBER DINAH O'BRIEN

The summer garden party celebrated  
the life and work of Nevada painter Hans  
Meyer-Kassel and his wife, Maria, who  
was renowned in northern Nevada for  
hosting elegant social gatherings.



### UPPER LEVEL MEMBERS TRAVELED **7,601** MILES TO AUSTRALIA

as part of the 2018 Art Trip. The 14 day trip  
included museums, galleries and cultural  
experiences in Melbourne, Sydney,  
Alice Springs, Hobart and Uluru.

# 2018 FINANCIAL REPORT

## ASSETS

Current Assets	\$ 7,004,853
Property & equipment, net	19,664,592
Investments & long-term pledges receivable	11,729,766
Permanent Collections	12,547,190
	<hr/>
	\$ 50,946,401
	<hr/>

## LIABILITIES

Current Liabilities	\$ 375,163
Other Liabilities	194,646
	<hr/>
Total Liabilities	569,809
	<hr/>

## NET ASSETS

Without donor restrictions	\$ 37,158,413
With donor restrictions	12,738,968
	<hr/>
Total net assets	50,376,592
	<hr/>
Total liabilities and net assets	\$ 50,946,401
	<hr/>

## INCOME

Contributions and grants	\$ 5,055,081
Exhibition loan revenue	\$ 185,500
Investment return, net of fees	(551,399)
Rental revenue	965,087
Memberships	739,565
Programs, events & tuition	557,285
Museum shop sales	291,054
Admissions	123,333
Other	315,093
	<hr/>
	\$ 7,680,599
	<hr/>

## EXPENSES

Program services	\$ 6,134,350
Supporting services	
Managerial and general	931,928
Development and fundraising	1,272,453
	<hr/>
	8,338,731
	<hr/>
Change in Net Assets	\$ 658,132
	<hr/>



# SUPPORT AND DONORS

## \$1 MILLION

State of Nevada

## \$250,000 +

Blockchains, LLC.

The Nell J. Redfield Foundation

William G. McGowan Charitable Fund

## \$100,000 +

Anonymous

E. L. Cord Foundation

Estelle J. Kelsey Foundation

Randi and Robert Fisher

Peter E. Pool

Switch

The Robert S. and Dorothy J. Keyser Foundation

The Thelma B. and Thomas P. Hart Foundation

Wayne L. Prim Foundation

## \$50,000 +

Carole K. Anderson

Barrick Gold of North America

Binion Family Foundation

Carol Franc Buck Foundation

Barbara and Tad Danz

Mario Gabelli

Heather and Ethan Goldman

IGT Contributions Committee

The Satre Family Foundation at the

Community Foundation of Western Nevada

The Arthur and Mae Orvis Foundation, Inc.

The Bretzlaff Foundation

The Jacquie Foundation

Thomas P. Raley Foundation

## \$25,000 +

Victor K. Atkins

Bank of America

Kathie Bartlett

Margaret and Charles Burback

Casazza SLV, LLC

Clarence and Martha Jones Family Foundation

Nancy and Harvey Fennel | Dickson Realty Co.

Eldorado Hotel & Casino

Sandy and Steven Hardie

Nancy and Brian Kennedy

Mercedes-Benz of Reno

Maureen Mullarkey and Steve Miller

Nevada State Bank

Odyssey Foundation

Sandy Raffealli | Porsche of Reno

Reno Sparks Convention &

Visitors Authority (RSCVA)

Robert Z. Hawkins Foundation

Heidemarie Rochlin

Helen and Charles Schwab

Piper Stremmel and Chris Reilly

Wells Fargo Foundation

Whittier Trust Company

## \$10,000 +

Anonymous

Anonymous

Anonymous

Abraham & Sonia Rochlin Foundation

Victoria and Victor K. Atkins

Catherine and John Farahi |

Atlantis Casino Resort Spa

Carol Ann and John Badwick

Brigid Barton and Rob Robinson

Denise and Tim Cashman

City National Bank

City of Reno Arts & Culture Commission

Confidence Foundation

Debbie Day

John C. Deane

Maria and Mark Denzler

Dolan Auto Group

Irene L. Drews

Carol Francis and Roger Elton

Gayle Ewing

Barbara and William Feltner

Sakurako and William Fisher

Nancy Flanigan

Barbara Hall

Jan and David Hardie

I. Heidi Loeb Hegerich

Steve Horn

Jack Van Sickle Foundation

Dorothy Lemelson

Dale Leonudakis

Marie Crowley Foundation

Marshall R. Matley Foundation

Ann Mathewson

Charlotte and Dick McConnell

Sheila and Keith B. McWilliams

Nevada Arts Council

Newe Ghani Inc.

Katie O'Neill and Chris Gonya

Linda and Alvaro Pascotto

Martha Hesse Dolan and Robert Dolan

Enid A. Oliver | ChFC, Private Wealth Advisor  
with Ameriprise Financial Services, Inc.

Eleanor and Robert Preger

Michele C. Quinn

RBC Wealth Management and City National Bank

Nancy and Ronald Remington

Reno Orthopedic Clinic

Renown Health

Robert Mapplethorpe Foundation

Jesse Rogers

Jenny and Garrett Sutton | Corporate Direct

Karyn and Lance Tendler

Sylvia and Jim Thacker

The Edna B. and Bruno Benna Family Foundation

The Leonette Foundation

The Sato Foundation

Elizabeth and Henry Thumann

Gigi and Lash Turville

Leslie and Harvey Wagner

Wawona Foundation

Norma and Ranson Webster

Western Nevada Supply Co.

Rory Higgins and Colby Williams

## \$5000 +

Josh Abraham

Basin Street Properties

Viki Matica and Doug Brewer

Elaine Cardinale

Crystal Family Foundation

Mimi Ellis-Hogan

Linda Frye

Sally and Edwin Hale

Heather James Fine Art

# SUPPORT AND DONORS

Henriksen Butler  
Henry Moore Foundation  
Madylon and Dean Meiling  
NV Energy  
Pro Helvetia  
Kristen and Leonard Remington  
Claire and Jeffrey Resnik  
James Sacherman  
Save Mart  
Jean and Jerry Pfarr  
Michael Strem  
Turkey and Peter Stremmel  
Sylvia and Jim Thacker  
The Charles H. Stout Foundation  
The Gamble Foundation  
Pauline and Thomas Tusher  
U.S. Bank Foundation  
Emily and Joe Wiczorek

## \$1000 +

Madeline Ackley  
Gail and Robert Aldrich  
Jill and Fred Altmann  
Jennifer and Martin Ash  
Nancy and Mark Aston  
Atthowe Fine Art Services  
Anne and Mark Bacon  
Kathleen Conaboy and John Bardwell  
Carol and James Barnes  
Ranee Barsanti and Jessica Ledbetter  
Cindy and Robert Beart  
Janice Bertozzi  
Nancy Binz  
Jeanne Blach  
Virginia Bruns and Randy Bolton  
Thomas Bottom  
Margaret and David Brant  
Laura Brigham and Brian Beffort  
Lois and Steven Brown  
Carol Franc Buck  
Lindsay and Casey Burchby  
Barbara and Keith Burrowes  
Linda and George Canavan  
Cancer Care Specialists  
Wanda Casazza

Myanhwa and Lou Cluster  
Nancy and Martin Cohen  
Craig and Brooke Conrath  
Jackie Cox and Craig Cunningham  
Claudia Cummings and Sierra Clark  
Anthony Czarnik  
Sarah Decker Ning and Wilson Ning  
Michael and Tammy Dermody  
Desert Research Institute  
Rebecca Dickson  
Iljosa and Cliff Dobler  
Suzanne Silverman and Dennis Dworkin  
Eileen and John Edgcomb  
Kristine and Patrick Ellingsworth  
Roberta and Neal Ferguson  
Susan Fisher  
Sheryl and Rob Fitzgerald  
Kellen Flanigan and Rob Stinnett  
Susan K. Fountain  
Lillian and Steve Frank  
Vanessa and Neal Franking  
Margaret and Edward Friedrichs  
Jane A. Adams and Bill Furman  
Gabelli Foundation, Inc.  
Valerie and John Glenn  
Grafics Unlimited  
Marcia and Charles Growdon  
Hal and Joan Kraft Family Fund  
Sherrie Hald  
Annie and Wesley Hall  
Lana and Steve Hardy  
Patti and Milledge Hart  
Judy and William Hartman  
Maryellen and Frank Herringer  
Historic Reno Preservation Society  
Helen and Carlton Honebein  
Linda Houghton and Jim Krantz  
Sharon and Gary Jacobson  
Nora and Bruce James  
Katherine and Stephen Jenkins  
Cayla Witty and Nolan T Jones  
Hy Kashenberg  
Margaret and Mike Kazmierski  
Kinder Morgan Foundation  
Edgar F. Kleiner

Sara and Leonard Lafrance  
Cynthia G. Lake  
Bonnie and Leif Larsen  
Gregory T H and Dana Lee  
Stephanie and Bob LeGoy  
Tricia Leonard  
Esther and Gerry Levandoski  
Gary Lieberthal  
Susan and Alan Liebman  
Heidi A. Loeb  
Toni and Richard Lowden  
David Lowndes  
Peggy Lowndes  
Cary Lurie and Wayne Smith  
Pat and Mark MacDonald  
Nancy and Alan Maiss  
Jacob Margolis  
Dorothy and John McCorkindale  
Cara and Laif Meidell  
Jean Merkelbach  
Lydia and Matt Meyer  
Amy Saathoff and Charlie Moberly  
Patricia Morales and Robert Nielsen  
Sarah and Neal Moritz  
Jean Myles  
Renate and Peter Neumann  
Nancy Northrup and Allen Black  
JoAnne and Philo Northrup  
Dinah O'Brien  
Amy Oppio  
Daphne Palmer and Laurence Heifetz  
Connie and Ronald Parratt  
Kathy and Dave Pasek  
Sue Anne and Kevin Pate  
Gail and Jim Pfrommer  
Mary Catherine and Ken Pierson  
Margo Piscevich  
Pat and Marshall Postman  
Jeanne Chambers and Nolan Preece  
Eleanor and Robert Preger  
Patricia Proctor and James Dykstra  
Mary Ann and Charles Quaglieri  
Craig Questa  
Mary Jayne Rader  
Bill Ramsey

# SUPPORT AND DONORS

Liz Ray  
Kathlin and Ron Ray  
Monica and Colin Robertson  
Barbara B. Rode  
Sari and Ian Rogoff  
Nancy Rose  
Crimson Rose and Will Roger  
Leah Sanders and Fritz M. Brunner  
Christine Scharff Sells and John Sells  
Joshua Shenk  
John Shields  
Iain Sievwright and Joe Zampino  
Linda and Ron Smith  
Michael and Karren Smith  
Mary and Raymond Solorzano  
Judy Sturgis  
Mary Telford  
John Thayer and Jennifer Smith  
Judith Topol  
Cathleen and Richard Trachok  
Karen and Michael Traynor  
Jean Venneman and YaYa Jacoby  
Mary Jo Blue and Richard Walker  
Darby and David Walker  
Karlene and Jim Webster  
Ian Weiss  
Phyllis and Ross Wetsel  
Tyler Whitten  
Joyce and Wayne Wilson  
Nad Winn  
Linda and King Won  
Christine Worthington  
Mary Liz and Ron Zideck

## INKIND CONTRIBUTIONS

**\$50,000 +**  
Brownstein Hyatt Farber Schreck  
McDonald Carano

**\$20,000 +**  
Atlantis Casino Resort Spa  
Good Morning Publications

**\$10,000 +**  
Great Basin Brewing Company  
Reno News & Review

**\$1000 +**  
Brad Bartlett Design  
Robin Lehman  
Dinah O'Brien  
Kimmie Candy Company

## HONORARIUMS AND MEMORIALS

IN MEMORY OF VALLI CASAZZA-HILL  
Judy Mayhew  
Barbara Marsh  
Helga Miller  
Ann Wolfe  
Amy Oppio  
Meg Watson

IN HONOR OF BARBARA DANZ  
Maryellen Herringer

IN MEMORY OF HARLAN HALL  
Barbara Hall

IN MEMORY OF HARRIET UHALDE  
Marjorie Uhalde





# EXHIBITION AND PROGRAM SPONSORS

## ANNE BRIGMAN: A VISIONARY IN MODERN PHOTOGRAPHY

### LEAD SPONSOR

Wayne and Miriam Prim

### MAJOR SPONSORS

The Bretzlaff Foundation  
Carol Franc Buck Foundation  
The Satre Family Fund at the  
Community Foundation of Western Nevada  
Louise A. Tarble Foundation

### SPONSORS

Carole K. Anderson  
Barbara and Tad Danz  
Nancy and Harvey Fennell | Dickson Realty  
Nancy and Brian Kennedy  
Mercedes-Benz of Reno, an AutoNation Company  
Whittier Trust, Investment & Wealth Management

### SUPPORTING SPONSORS

Brigid S. Barton  
Denise Cashman  
The Chica Charitable Gift Fund  
Mimi Ellis-Hogan  
Jan and David Hardie  
The Robert Mapplethorpe Foundation  
Keith and Sheila McWilliams  
Eleanor and Robert Preger  
Jenny and Garrett Sutton | Corporate Direct, Inc.  
Lash and Gigi Turville

### ADDITIONAL SUPPORT

Kathie Bartlett  
John C. Deane

## TREVOR PAGLEN: ORBITAL REFLECTOR

### TITLE SPONSOR

Blockchains, LLC

### PREMIER SPONSORS

I. Heidi Loeb Hegerich  
Switch  
Louise A. Tarble Foundation

### LEAD SPONSORS

Jacques and Natasha Gelman Foundation  
The Jacquie Foundation  
Piper Stremmel and Chris Reilly

### MAJOR SPONSORS

Barrick Gold  
Charles and Margaret Burback Foundation  
The Fisher Brothers  
Nion McEvoy  
RBC Wealth Management and City National Bank

### SPONSORS

Sandy and Steven Hardie

### SUPPORTING SPONSORS

Karyn and Lance Tandler

### ADDITIONAL SUPPORT

Henry Moore Foundation

## HANS MEYER-KASSEL: ARTIST OF NEVADA

### MAJOR SPONSOR

Louise A. Tarble Foundation

### SPONSORS

Anonymous  
The Thelma B. and Thomas P. Hart Foundation  
Nevada Arts Council  
The Private Bank by Nevada State Bank  
Sandy Raffealli | Porsche of Reno  
Volunteers in Art of the Nevada Museum of Art  
Edgar F. Kleiner

### SUPPORTING SPONSORS

Anonymous  
Irene Drews  
Jenny and Garrett Sutton | Corporate Direct, Inc.

## MARKING THE INFINITE: CONTEMPORARY WOMEN ARTISTS FROM ABORIGINAL AUSTRALIA

### LEAD SPONSOR

The Collections Committee of  
the Nevada Museum of Art:  
Barbara and Tad Danz  
Martha Hesse Dolan and Robert E. Dolan  
Dolan Law LLC  
Maureen Mullarkey and Steve Miller  
Kathie Bartlett  
John C. Deane  
Turkey and Peter Stremmel  
Nancy and Harvey Fennell  
Linda Frye  
Marcia and Charles Growdon  
Sari and Ian Rogoff  
Darby and David Walker

### SPONSORS

Sandy Raffealli | Bill Pearce Motors of Reno

### SUPPORTING SPONSORS

Maria and Mark Denzler

# EXHIBITION AND PROGRAM SPONSORS

## SCHOOL TOUR PROGRAM

### LEAD SPONSOR

Switch

### MAJOR SPONSORS

The Nell J. Redfield Foundation

The Arthur and Mae Orvis Foundation, Inc.

The Hearst Foundations

### SPONSORS

Clarence and Martha Jones Family Foundation

Heidemarie Rochlin

Robert Z. Hawkins Foundation

The Thelma B. and Thomas P. Hart Foundation

Wells Fargo Foundation

### SUPPORTING SPONSORS

Dorothy Lemelson

Jack Van Sickle Foundation

The Sato Foundation

Marshall R. Matley Foundation

Marie Crowley Foundation

Tamarack Crossing, LLC

The Edna B. and Bruno Benna Family Foundation

Western Nevada Supply Co.

### ADDITIONAL SUPPORT

Basin Street Properties

Roxie and Azad Joseph Foundation

Save Mart

The Charles H. Stout Foundation



## HANDS ON! SECOND SATURDAYS

### MAJOR SPONSOR

Thomas P. Raley Foundation

### SPONSORS

NV Energy

Renown Health

The Nightingale Family Foundation

Mercedes-Benz of Reno, an AutoNation Company

### ADDITIONAL SUPPORT

U.S. Bank Foundation

City of Reno Arts & Culture Commission

Bank of America