

Where Art and Tech Collide

January 25, 2020 - June 21, 2020

NEWTON AND LOUISE TARBLE GALLERY

FINAL EXHIBITION CHECKLIST

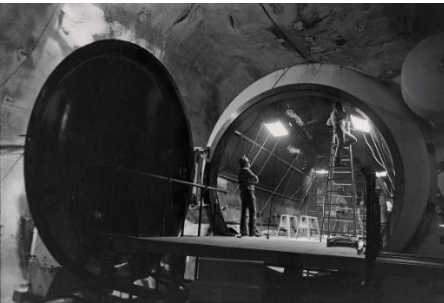
	<p>Leo Villareal Particle Field, 2017 Triptych, LED monitors, electrical hardware and custom software 57 x 97 1/4 x 4 1/2 inches Collection of the Nevada Museum of Art Museum purchase with funds from the Tarble Art Acquisition Fund</p>
	<p>Jim Sanborn Text Projection: Blue Mesa, Utah, 1995 Large-format projection and digital print 24 x 30 inches Collection of the Nevada Museum of Art The Altered Landscape Carol Franc Buck Collection</p>
	<p>Erik Lauritzen Under Construction #1, not dated Dye coupler print 15 1/4 x 19 1/4 inches Collection of the Nevada Museum of Art Museum purchase, 1992 Biennial Prize</p>
	<p>Wayne Barrar Stored Stainless Steel Equipment from the series "Saltworks: The Processed Landscape", 1987 Cibachrome 10 3/4 x 14 inches Collection of the Nevada Museum of Art The Altered Landscape Carol Franc Buck Collection, Gift of the artist</p>



Patrick Nagatani
**Rocket Lounge, Alamogordo,
New Mexico, 1989**
Chromogenic print
17 x 22 inches
Collection of the Nevada Museum of Art
The Altered Landscape
Carol Franc Buck Collection



Jamey Stillings
**Arizona Pylon View, from the
"Bridge at Hoover Dam" series, 2009**
Archival pigment print
31 x 44 inches
Collection of the Nevada Museum of Art
The Altered Landscape
Purchased with funds provided by
Dorothy Lemelson



Robert Del Tredici
**Tending to "Misty Rain" (Area 12,
Nevada Test Site, Nye County, Nevada,
October 29, 1984), 1984**
Gelatin silver print
12 1/4 x 18 inches
Collection of the Nevada Museum of Art
The Altered Landscape
Carol Franc Buck Collection, Gift of the
Artist



Andy Diaz Hope
Starry Night, 2018 – 19
Safety glass, .22 and .45 bullets, 410
shotgun shells, LED lights, burnt oak
frame
38 x 83 3/4 x 7 3/4 inches
Courtesy of the artist and Catharine
Clark Gallery, San Francisco

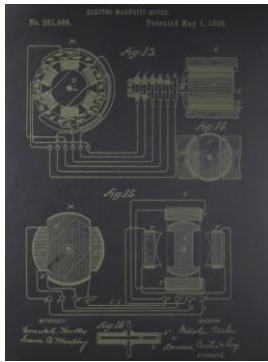


Camille Utterback
Precarious
2018
Interactive installation (custom
software, computer, depth-camera,
projection, lighting) Dimensions variable
- minimum projection and interactive
floor area sizes, 7 x 11 feet each
Courtesy of the artist and
Haines Gallery, San Francisco

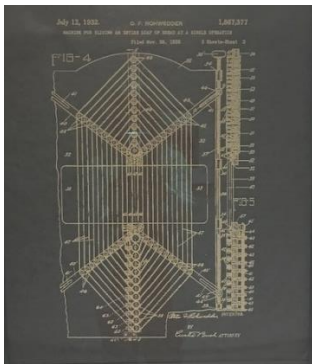


Trevor Paglen
Diamond Reflector, 2018
Lacquered steel
85 x 7 x 7 1/2 inches
Collection of the Nevada Museum of Art
Gift of the artist

Kal Spelletich
**Who controls the past controls the future.
Who controls the present controls the past., 2019**
Laser Carved Archival Paper
See below for individual entries
Courtesy of the artist and Catharine Clark Gallery



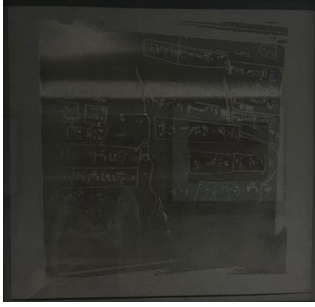
Serbian-American inventor **Nikola Tesla's** (1856-1943) first great invention in 1887 was an induction motor which introduced the practice of transmitting power with an alternating current [AC], which is today the main power for both industry and household appliances.
25 1/4 x 19 inches



American inventor and engineer **Otto Frederick Rohwedder** (1880-1960) invented the first single loaf bread-slicing machine.
22 1/2 x 19 inches



In 1801 English physicist **Thomas Young** (1773-1829) performed what is now known as Young's light interference experiment, proving that light travels as a wave, rather than in a stream of particles as argued by Sir Isaac Newton.
20 3/4 x 15 3/4 inches



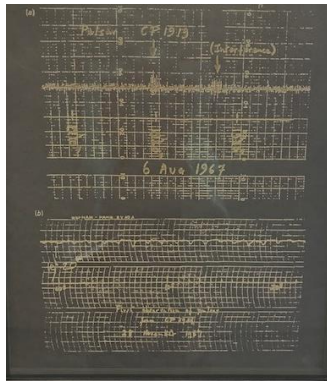
German-born theoretical physicist **Albert Einstein** (1879-1955) developed the theory of relativity in 1905, one of the most famous scientific theories of the twentieth century. The engraving is an image of his chalkboard at the time of his death.

14 1/2 x 14 1/2 inches



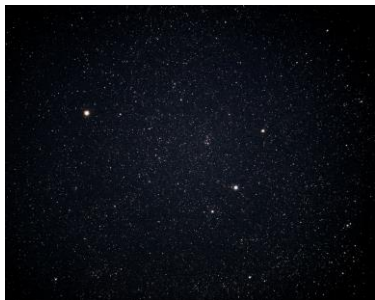
Italian astronomer, physicist, and engineer **Galileo Galilei** (1564-1642) created drawings of Earth's Moon as seen with his telescope. By his own account, Galileo first observed the Moon on November 30, 1609. Comparing patterns of light and shadow, Galileo convincingly argued that mountains and valleys existed on the lunar surface. This engraving reproduces a drawing from Galileo's 1610 astronomical treatise *Sidereus Nuncius* (Starry Messenger).

11 x 8 1/2 inches



Jocelyn Bell Burnell, born 1943 in Northern Ireland is responsible for one of the most important astrophysics discoveries of the 20th century: the radio pulsar. The discovery, which she made as a graduate student at University of Cambridge earned a Nobel Prize in 1974. But Bell Burnell didn't collect the Nobel; instead, the award went to her supervisor at the University of Cambridge, Antony Hewish. However, she is now recognized as the pioneer who made this breakthrough discovery.

18 x 15 1/2 inches



Trevor Paglen
An Unseen Star (OR-1 Search in Cepheus) Delamar Dry Lake, NV, 2019
C-print
40 x 60 inches
Collection of the Nevada Museum of Art
Gift of the artist



Gail Wight
Pin Up, 2006
Silk, rice paper, electronics, and
software
15'w x 12'h x .5'd
Courtesy of the artist