

# Adaline Kent: The Click of Authenticity

January 28, 2023 – September 14, 2023

Nevada Museum of Art

## EXHIBITION CHECKLIST FOR EXTERNAL USE



*Printemps* (Springtime)

1927

Brass

12 x 4 ½ x 4 in. (30.5 x 11.4 x 10.2 cm)

Collection of Adaline J. Hilgard



*Young Woman*

1927

Bronze

27 ¼ x 11 3/8 x 7 in. (69.2 x 28.6 x 17.8 cm)

San Francisco Museum of Modern Art, Albert M.

Bender Collection; gift of Albert M. Bender



*Caryatid*  
c.1927  
Bronze  
7 ¼ x 3 ¼ x 3 ¼ in. (18.4 x 8.3 x 8.3 cm)  
Collection of the Adaline Kent Family



*Lamb*  
c. 1927  
Bronze and marble  
4 1/8 x 2 ¾ x 1 ¼ in. (10.5 x 7 x 3.2 cm)  
Collection of the Adaline Kent Family



*Phoenix*  
c. 1927  
Poured concrete  
16 x 15 x 3 in. (40.6 x 38.1 x 7.6 cm)  
The Anne (Nancy) Kent Danielson Estate – Kent Erskine



*Noah Praying for Rain*

c. 1928

Bronze

6 ½ x 5 ¾ x 2 ½ in (16.5 x 14.6 x 6.4 cm)

Collection of Galen Rohrs Roll



*Grasshopper*

1929

Granite

12 x 14 x 28 in. (30.5 x 35.6 x 71.1 cm)

Thacher School, Ojai



*Study for Grasshopper*

1929

Granite

7 ½ x 6 x 13 ½ in. (19.1 x 15.2 x 34.3 cm)

Collection of Lucinda Kent Maushardt



*Nude*  
1931  
Ebony  
21 x 6 ½ x 4 ½ in. (53.3 x 16.5 x 11.4 cm)  
Collection of Perrin and Rita French



*Young Dancer*  
1931  
Bronze  
6 x 2 ¾ x 2 ¾ in. (15.2 x 7 x 7 cm)  
Collection of Julia Hilgard Ritter



*Jane Berlandina*  
1932  
Terracotta  
16 x 4 ½ x 5 in. (40.6 x 11.4 x 12.7 cm)  
Collection of the Mandell Family



*Nude (Standing Girl With Drape)*

1934

Terracotta

20  $\frac{3}{4}$  x 5  $\frac{1}{2}$  x 4 in. (52.7 x 14 x 10.2 cm)

Mills College Art Museum, Museum Purchase, Susan L. Mills Fund



*Personage*

c. 1935

Terracotta

10  $\frac{3}{4}$  x 7 x 7  $\frac{1}{4}$  in. (27.3 x 17.8 x 18.4 cm)

Collection of Galen Howard Hilgard



*Scavenger*

c. 1935

Terracotta

12 x 6 x 6 in. (30.5 x 15.2 x 15.2 cm)

Collection of Rebecca B. Sawyer



*Untitled (Mother and Child)*  
c. 1935  
Terracotta  
6 ½ x 4 x 3 ¼ in. (16.5 x 10.2 x 8.3 cm)  
Collection of Galen Rohrs Roll



*Daughters*  
c.1939  
Terracotta  
23 ½ x 11 ½ x 7 ½ in. (59.7 x 29.2 x 19.1 cm)  
Collection of the Adaline Kent Family



*Sapphire Lake*  
1939  
Pastel on paper  
4 ¾ in. x 7 ¾ in. (12.1 x 19.7 cm)  
Collection of the Adaline Kent Family



*Untitled (Tumblers)*

c.1940

Ink, pastel, and watercolor on paper

15 x 17 3/4 in. (38.1 x 45.1 cm)

Collection of Galen Howard Hilgard



*Untitled (Tumblers with Kites)*

c.1940

Ink, pastel, and watercolor on paper

14 x 18 in. (35.6 x 45.7 cm)

Collection of Galen Howard Hilgard



*Tumblers*

1940

Terracotta

12 1/4 x 5 x 4 in. (31.1 x 12.7 x 10.2 cm)

Collection of Sadie W. Super



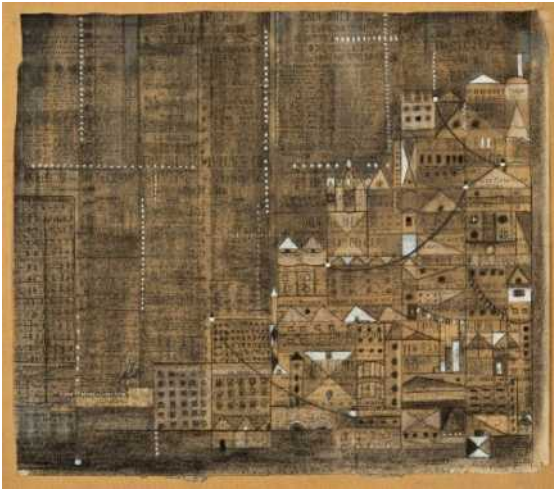
*Self-Portrait*

1943

Terracotta and fishnet

9 x 12 x 10 in. (22.9 x 30.5 x 25.4 cm)

Collection of the Adaline Kent Family



*Cable Car Hill*

1944

Charcoal and gouache on newspaper

15 1/8 x 19 1/8 in. (38.4 x 48.6 cm)

Collection of the Adaline Kent Family





*Cascade* from the *Mountain Series*  
1944  
Ink, graphite, and crayon on paper  
16 x 14 in. (40.6 x 35.6 cm)  
Collection of the Adaline Kent Family



*Cascade* from the *Mountain Series*  
1944  
Ink and crayon on paper  
16 x 14 in. (40.6 x 35.6 cm)  
Collection of the Adaline Kent Family



*Divide*  
1944  
Ink, pastel, and crayon on paper  
14 x 17 ¾ in (35.6 x 45.1 cm)  
Collection of the Adaline Kent Family



*River Over the Rocks (Design for Scarf)*  
1944  
Ink and gouache on paper  
36 x 36 in. (91.4 x 91.4 cm)  
Collection of the Adaline Kent Family



*River Over the Rocks from the Mountain Series*  
1944  
Ink, charcoal, graphite, and crayon on paper  
18 x 15 in. (45.2 x 38.1 cm)  
Collection of the Adaline Kent Family



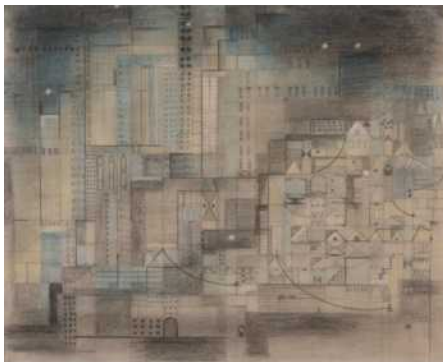
*River Over the Rocks from the Mountain Series*  
1944  
Ink and crayon on paper  
17 x 14 in. (43.2 x 35.6 cm)  
Collection of the Adaline Kent Family



*Rocks*  
1944  
Ink and crayon on paper  
13 ½ x 16 in. (34.3 x 40.6 cm)  
Collection of Galen Howard Hilgard



*Study for High Sierra*  
1944  
Gouache, India Ink, graphite, and watercolor on paper  
17 x 14 in. (43.2 x 35.6 cm)  
Collection of the Adaline Kent Family



*Untitled*  
1944  
Ink and colored graphite on paper  
13 ¼ x 16 ½ in. (33.7 x 42 cm)  
Collection of Sherman and Laura Kent



*Glade*

c.1944

Ink, charcoal, and colored pencil on paper

14 x 11 in. (35.6 x 27.9 cm)

Collection of the Adaline Kent Family



*Mountain Meadow*

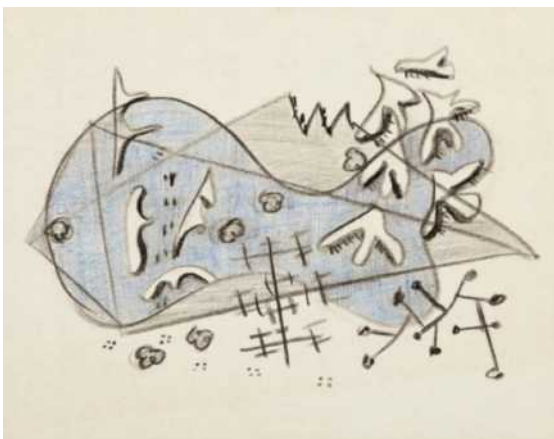
c. 1944

Ink, graphite, and gouache on paper

15 ½ x 12 1/8 in. (39.4 x 30.8 cm)

(framed dimensions)

Collection of the Adaline Kent Family



*Mountain Meadow, Winter*

c.1944

Crayon and colored pencil on paper

11 x 14 in. (27.9 x 35.6 cm)

Collection of the Adaline Kent Family





*Rocks*  
c.1944  
Colored graphite and ink on paper  
13 x 17. (33 x 43.2 cm)  
Collection of Sherman and Laura Kent



*Untitled (Glade)*  
c.1944  
Ink, charcoal, and colored pencil.  
14 x 11 in. (35.6 x 27.9 cm)  
Collection of the Adaline Kent Family

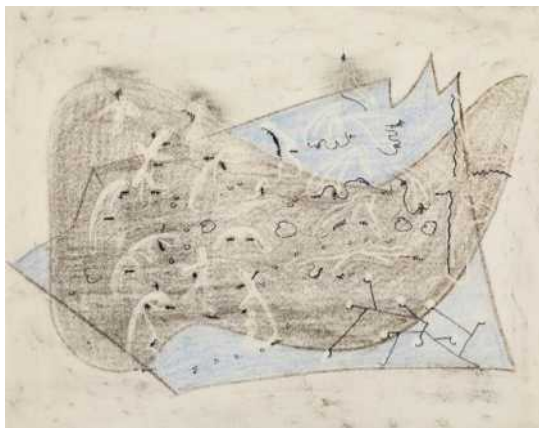


*Untitled (Mountain Meadow)*  
c. 1944  
Ink and crayon on paper  
17 x 13 7/8 in. (43.2 x 34.9 cm)  
Collection of the Adaline Kent Family

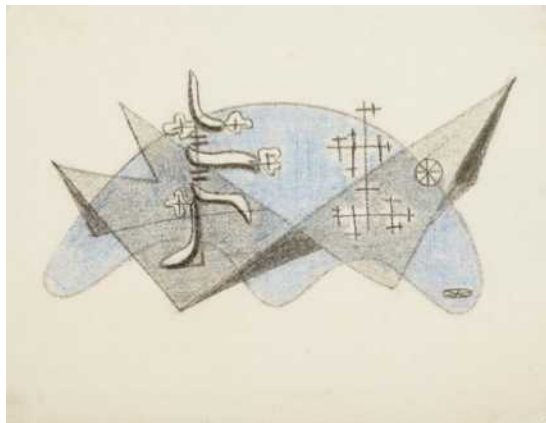


*Untitled (Snow-clad Trees)*  
c. 1944  
Crayon and colored pencil on paper  
11 x 14 in. (27.9 x 35.6 cm)  
Collection of the Adaline Kent Family

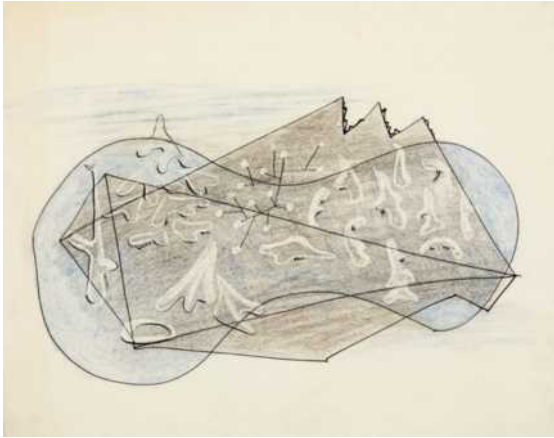
In Capitola storage  
vitrine



*Untitled (Winter Landscape)*  
c.1944  
Ink, charcoal, and colored pencil on paper  
11 x 14 in. (27.9 x 35.6 cm)  
Collection of the Adaline Kent Family



*Untitled (Winter Landscape)*  
c.1944  
Ink, charcoal, and colored pencil on paper  
11 x 14 in. (27.9 x 35.6 cm)  
Collection of the Adaline Kent Family



*Untitled (Winter Landscape)*  
c. 1944  
Ink and colored pencil on paper  
11 x 14 in. (27.9 x 35.6 cm)  
Collection of the Adaline Kent Family



*Dark Mountain*  
1945  
Hydrocal with incised lines, egg tempera  
33 ¾ x 12 ½ x 8 in. (85.7 x 31.8 x 20.3 cm)  
San Francisco Museum of Modern Art; purchase



*Song*  
1945  
Tempera on incised Hydrocal  
17 ½ x 21 ¼ in. (44 x 54 cm)  
Collection of Adaline J. Hilgard



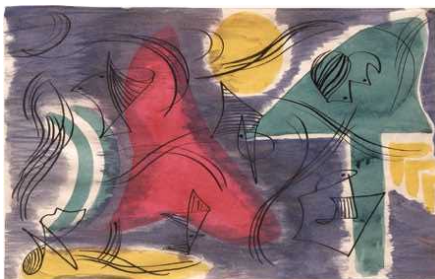
*Sugar Bowl*  
1945  
Tempera on incised Hydrocal  
14 ¾ x 18 in. (37.5 x 45.7 cm)  
Private collection



*Wellspring*  
1945  
Tempera on incised Hydrocal  
14 x 16 ½ in. (35.6 x 41.9 cm)  
Museum of Art and Archaeology, University of Missouri; gift of the Betty Parsons Foundation

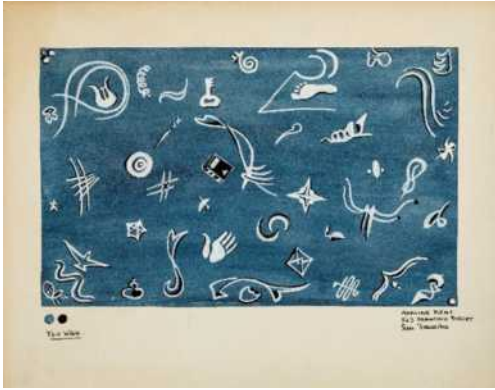


*Untitled*  
c. 1945  
Gouache on paper  
7 ½ x 12 in. (19 x 30.5 cm)  
Collection of the Adaline Kent Family



*Untitled*  
c. 1945  
Ink and gouache on paper  
7 ½ x 12 in. (19 x 30.5 cm)  
Collection of the Adaline Kent Family





*You Wish*  
c.1945  
Ink and gouache on paper  
13 3/8 x 14 1/4 in. (34.2 x 36.2 cm)  
Collection of the Adaline Kent Family



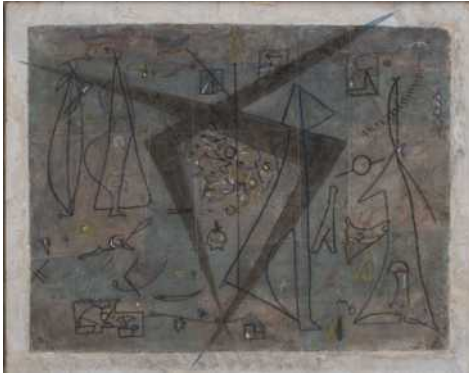
*Chord*  
1946  
Hydrocal  
7 1/2 x 8 1/2 x 5 3/8 in. (19.1 x 21.6 x 14 cm)  
Collection of Linda and David Keaton



*Far and Away*  
1946  
Tempera on incised Hydrocal  
21 1/2 x 16 3/4 in. (54.6 x 42.6 cm)  
Collection of Adaline J. Hilgard



*First Flute*  
1946  
Aluminum  
12 1/2 x 5 1/2 x 6 1/2 in. (31.8 x 14 x 16.5 cm)  
Collection of Alice Benét and Jon Kersey



*Journey*  
1946  
Tempera on incised Hydrocal  
16 x 21 in. (40.6 x 53 cm)  
Collection of Sherman and Laura Kent



*Lost Things*  
1946  
Tempera on incised Hydrocal  
11 ½ x 17 in. (29.2 x 43.2 cm)  
Collection of Galen Howard Hilgard



*Universal Compass*  
1946  
Hydrocal and egg tempera  
8 x 9 x 6 ¼ in. (20.3 x 22.9 x 15.9 cm)  
Private collection



*Skylight*  
c. 1946  
Pigment on incised gypsum  
18 x 22 in. (45.7 x 55.9 cm)  
Collection of Perrin and Rita French



*Days of Our Youth*  
1947  
Tempera on incised Hydrocal  
16 x 21 in. (40.7 x 53.3 cm)  
Collection of Galen Rohrs Roll



*The Islands*  
1947  
Tempera on incised Hydrocal  
17 x 23 7/8 in. (43.2 x 61 cm)  
Berkeley Art Museum and Pacific Film Archive



*Presence*  
1947  
Magnesite  
42 3/4 x 17 3/4 x 7 1/4 in. (108.6 x 45.1 x 18.4 cm)  
Collection of San Francisco Museum of Modern Art;  
gift of the Women's Board and the Membership  
Activities Board



*Writ*  
1947  
Tempera on incised Hydrocal  
15 ½ x 20 ½ (39.4 x 52.1 cm)  
Collection of Julia Hilgard Ritter



*Never Fear*  
1948  
Incised Hydrocal with pigment  
22 ½ x 9 x 8 in. (57.2 x 22.9 x 10.3 cm.)  
Private collection



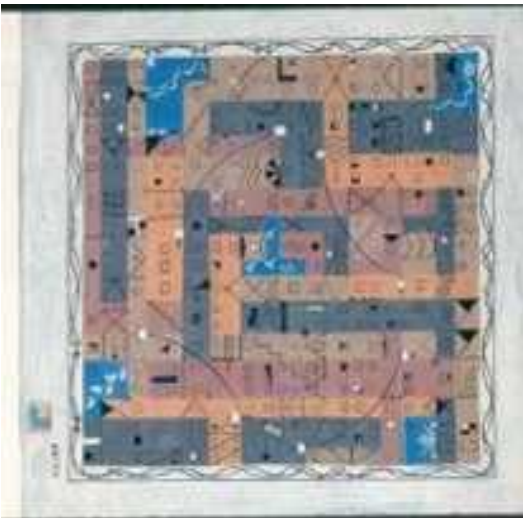
*Truth to Tell*  
1948  
Paper-mâché and string mounted on base  
24 x 14 ½ x 5 ¼ in. (60.9 x 36.8 x 13.3 cm)  
Fine Arts Museums of San Francisco; gift of Walter  
and Josephine Landor



*Untitled (Small Clay Model)*  
1948  
Terracotta  
3 5/8 x 2 5/8 x 1 5/8 in. (9.2 x 6.7 x 4.1 cm)  
Collection of Galen Rohrs Roll



*Voyage*  
1948  
Tempera on incised Hydrocal  
18 x 7 x 7 in. (45.7 x 17.8 x 17.8 cm)  
Collection of Sherman and Laura Kent



*A Certain City (Design for Scarf)*  
1948-1949  
Ink and gouache on paper  
36 x 36 in. (91.4 x 91.4 cm)  
Collection of the Adaline Kent Family



*Dialogue (Hydrocal form #49)*

1949

Hydrocal

5 ¾ x 5 5/8 x 2 1/8 in. (14.6 x 14.2 x 5.4 cm)

The Buck Collection at UCI Institute and Museum of California Art



*Link*

1949

Terracotta with pigment

2 x 3 ¼ x 2 ¾ in. (5.1 x 8.3 x 7 cm)

Collection of Julia Hilgard Ritter



*Meteor*

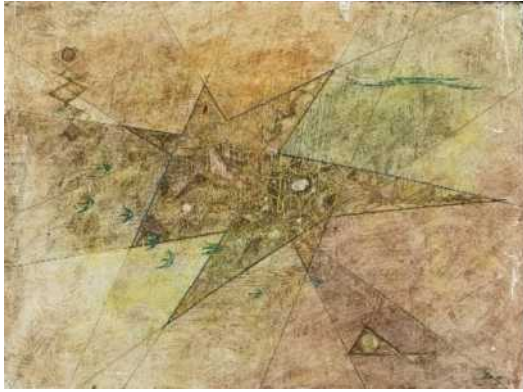
1949

Hydrocal

7 ½ x 8 x 9 in. (19.1 x 20.3 x 22.9 cm)

University of California, Berkeley Art Museum and Pacific Film Archive; gift of Jeffrey and Meri Lane





*The Navigators*  
1949  
14 ½ x 19 ¾ in. (36.8 x 50.2 cm)  
Tempera on incised Hydrocal  
Collection of the Adaline Kent Family



*Knot*  
c. 1950  
Hydrocal  
8 x 8 x 8 in. (20.3 x 20.3 x 20.3 cm)  
Collection of Serafina K. Bathrick and Sherman T. Kent



*Journey by Moon*  
1951  
Lead  
19 x 7 x 3 ½ in. (48.3 x 17.8 x 8.9 cm)  
Collection of the Lucid Art Foundation



*Model for Monument I*  
1951  
Terracotta  
3 x 3 5/8 x 2 7/8 in. (7.6 x 9.2 x 7.3 cm)  
Collection of the Adaline Kent Family



*Night Flyer*  
1951  
Magnesite with inclusions  
20 x 27 x 20 in. (50.8 x 68.6 x 50.8 cm)  
Collection of Sherman and Laura Kent



*Luna*  
1952  
Cement with pebbles and shells inclusions  
9 1/2 x 12 1/2 x 5 1/2 (24.1 x 31.8 x 14 cm)  
Collection of the Adaline Kent Family





*Offering*  
1952  
Hydrocal with shells  
1 7/8 x 14 x 4 in. (4.8 x 35.6 x 10.1 cm)  
Collection of the Adaline Kent Family



*Figment*  
1953  
Bronze  
65 x 9 1/2 x 9 1/2 in. (165.1 x 24.1 x 24.1 cm)  
San Francisco Museum of Modern Art; gift of Robert B. Howard in honor of Grace McCann Morley, Director (1935-58)



*Finder*  
1953  
Magnesite (two pieces)  
70 x 40 x 12 in. (177.8 x 101.6 x 30.5 cm)  
Los Angeles County Museum of Art; gift of Galen Kent Howard Hilgard in memory of her sister Ellen Kent Howard



*Moon Dial*  
1953  
Magnesite with inclusions  
22 x 21 x 15 in. (55.9 x 53.3 x 38.1 cm)  
Collection of the Adaline Kent Family



*No. 3*  
1953  
Ink and gouache on paper  
63 x 30 in. (160 x 76.2 cm)  
Collection of the Adaline Kent Family



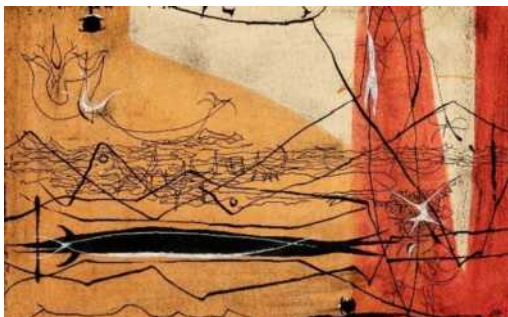
*This too for GKH*  
1953  
Gouache and ink on paper  
26 ¼ x 11 ¼ in. (66.7 x 28.6 cm)  
Collection of Adaline J. Hilgard



*Twentieth Century*  
1953  
Ink and gouache on paper  
23 ½ x 9 in. (60 x 22.9 cm)  
Collection of Leah Middlebrook



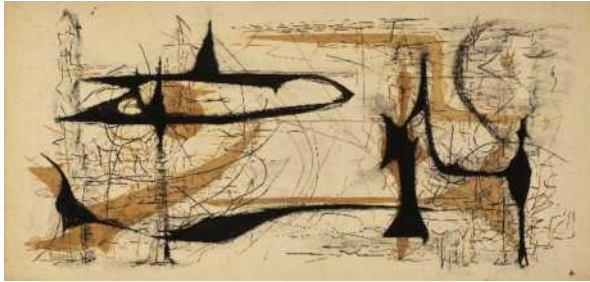
*Untitled*  
1953  
Ink and gouache on paper  
52 x 24 1/8 in. (132.1 x 61.3 cm)  
San Francisco Museum of Modern Art; gift of Phoebe Brown, Adaline Kent, and James Lee, dedicated in memory of Robert C. McLane



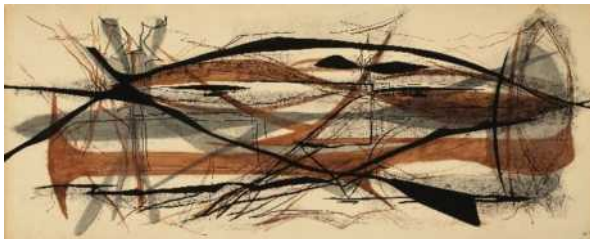
*Untitled (Orange Landscape)*  
1953  
Ink and wash on paper  
6 ¾ x 10 ¾ in. (17.2 x 27.3 cm)  
Collection of Adaline J. Hilgard



*III*  
1953  
Ink and gouache on paper  
52 ½ x 21 in. (133.4 x 53.3 cm)  
Collection of Galen Howard Hilgard



*IV*  
1953  
Ink and gouache on paper  
30 x 63 in. (76.2 x 160 cm)  
Collection of the Adaline Kent Family



*V*  
Ink and gouache on paper  
1953  
Ink and gouache on paper  
25 ½ x 63 in. (64.8 x 160 cm)  
Collection of the Adaline Kent Family



*VII*  
1953  
Ink and gouache on paper  
25 ¼ x 60 in. (64.1 x 152.4 cm)  
Collection of Sherman and Laura Kent



*Go and Catch a Falling Star*  
c. 1953  
Gouache on paper  
48 x 132 in. (121.9 x 335.3 cm)  
Collection of Galen Howard Hilgard



*Ear of Dionysius (Cave)*  
1954  
Terracotta with pigment  
6 x 6 x 6 in. (15.2 x 15.2 x 15.2 cm)  
Collection of Christopher and Fred Schardt



*Echo ("E")*  
1954  
Terracotta  
13 x 6 x 6 in. (33 x 15.2 x 15.2 cm)  
Private collection



*Rendezvous*  
1954  
Terracotta  
15 x 19 ¾ x 5 in. (38.1 x 50.2 x 12.7 cm)  
Collection of Galen Howard Hilgard





*To An Ancient God*

1954

Terracotta (two pieces)

22 ½ x 6 ½ x 6 ½ in. (57.2 x 16.5 x 16.5 cm)

Collection of Julia Hilgard Ritter



*To The Mocatam Hills,*

1954

Ink, charcoal, and wash on paper

12 ½ x 27 ¼ in. (31.8 x 69.2 cm)

Collection of Galen Rohrs Roll



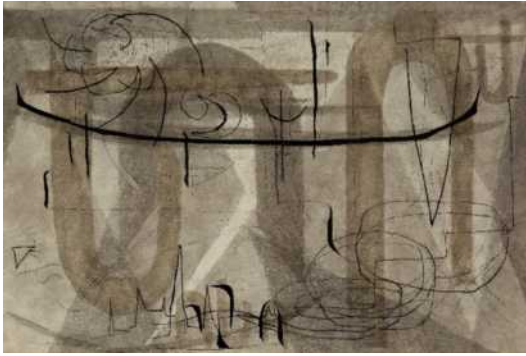
*Tower for a Lady*

1954

Terracotta

16 x 6 x 4 in. (40.6 x 15.2 x 10.2)

Private Collection



*Untitled*  
1954  
Ink and wash on paper  
1954  
26 ¾ x 40 ¼ in. (68 x 102.2 cm)  
Collection of the Adaline Kent Family



*Untitled*  
c.1954  
Granite and clay (two pieces)  
12 1/8 x 5 ¼ x 4 ½ in. (30.8 x 5.3 x 11.4 cm)  
Collection of the Adaline Kent Family



*African Sun*  
1955  
Ink and wash on paper  
17 x 9 1/8 in. (43.2 x 23.2 cm)  
Collection of Julia Hilgard Ritter



*Another Spring*  
1955  
Ink and wash on paper  
25 ½ x 56 in. (64.8 x 142.2 cm)  
Collection of Julia Hilgard Ritter



*Castle (Retreat)*  
1955  
Terracotta  
16 ½ x 8 ½ x 6 in. (41.9 x 22 x 15.2 cm)  
Collection of Galen Howard Hilgard



*Catacomb*  
1955  
Terracotta with pigment  
8 x 6 x 6 in. (20 x 15.2 x 15.2 cm)  
Collection of Christopher and Fred Schardt

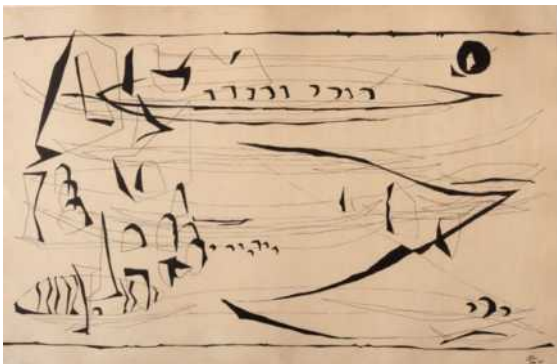




*Citadel*  
1955  
Terracotta  
12 7/8 x 19 1/8 x 6 in. (32.7 x 48.6 x 15.2 cm)  
Whitney Museum of American Art, New York;  
purchase



*Confidante*  
1955  
Terracotta  
16 3/4 x 4 1/2 x 3 1/2 (42.5 x 11.4 x 8.9 cm.)  
Private collection



*Hourglass*  
1955  
Ink on paper  
25 3/4 x 39 3/4 in. (65.4 x 100.9 cm.)  
Private collection



*Lamp Model*

1955

Terracotta (two pieces)

12 x 4 <sup>3</sup>/<sub>4</sub> x 4 <sup>3</sup>/<sub>4</sub> in. (30.5 x 12 x 12 cm)

Collection of the Adaline Kent Family

Santa Cruz; in Capitola storage



*Vestal*

1955

Terracotta

14 <sup>1</sup>/<sub>4</sub> x 4 x 3 <sup>1</sup>/<sub>4</sub> in. (36.2 x 10.2 x 8.3 cm)

Collection of Galen Rohrs Roll



*Blue Mountain*

c. 1955

Terracotta with blue pigment

5 ½ x 3 x 3 in. (14 x 7.6 x 7.6 cm)

Collection of Adaline J. Hilgard



*Argosy*

1956

Terracotta

12 ¼ x 11 ½ x 3 in. (31.1 x 29.2 x 7.6 cm)

University of California, Berkeley Art Museum and Pacific Film Archive; gift of Jeffrey and Meri Lane



*Bristle*

1956

Terracotta

6 x 1 ½ x 1 ½ in (15.2 x 3.8 x 3.8 cm)

The Estate of Jeanne Reynal, Courtesy Eric Firestone Gallery



*Flower*  
1956  
Terracotta and ink  
10 ½ x 5 ½ x 5 in. (26.7 x 14 x 12.7 cm)  
Collection of Galen Howard Hilgard



*Haiti*  
1956  
Ink on paper  
36 x 17 ½ in. (91.4 x 44.5 cm)  
Collection of Dan and Claire Carlevaro



*Lighthouse for Birds*  
1956  
Terracotta (two pieces)  
31 ¼ x 8 x 7 ½ in. (79.4 x 20.3 x 17.8 cm)  
Collection of Adaline J. Hilgard



*Presentation*

1956

Terracotta (two pieces)

23 x 8 x 8 in. (58.4 x 20.3 x 20.3 cm)

Fine Arts Museums of San Francisco; gift of Walter and Josephine Landor



*Six At the Gate*

1955

Terracotta

2 x 3 ½ x 3 in. (5 x 8.9 x 7.6 cm)

Collection of the Adaline Kent Family



*Trumpet*

1956

Terracotta

36 x 9 x 9 in. (91.4 x 22.8 x 22.8 cm)

The John and Susan Horseman Collection; Courtesy of the Horseman Foundation



*Winter Palace (Votive)*  
1956  
Terracotta (two pieces)  
10 x 4 x 4 in. (25.4 x 10.2 x 10.2 cm)  
Collection of the Adaline Kent Family



*Bud (Tulip)*  
1957  
Terracotta  
9 x 3 ½ x 3 ½ in. (22.9 x 8.9 x 8.9 cm)  
Collection of Galen Howard Hilgard



*Lamp*  
1957  
Terracotta (two pieces)  
14 x 4 ½ x 4 ½ in. (35.6 x 11.4 x 11.4 cm)  
Collection of Galen Howard Hilgard



*Last Piece*  
1957  
Terracotta  
30 x 15 x 14 in. (76.2 x 38.1 x 35.6 cm)  
Collection of Galen Howard Hilgard



*Magnet*  
1957  
Terracotta  
14 5/8 x 4 3/4 x 4 1/2 in. (37.1 x 12 x 11.4 cm)  
Collection of the Adaline Kent Family



*Queen Mother*

1957

Terracotta (two pieces)

25 x 8 ½ x 8 ½ in. (63.5 x 21.6 x 21.6 cm)

Collection of Galen Howard Hilgard



*Sage*

1957

Terracotta (two pieces)

21 ½ x 9 x 8 in. (54.6 x 22.9 x 20.3 cm)

Collection of Galen Howard Hilgard



*Star (Tribute)*

Terracotta (two pieces)

1957

22 ½ x 12 ½ x 7 ½ in. (57.2 x 31.8 x 19.1 cm)

Collection of Galen Rohrs Roll





*Lamp Model*  
1957  
Terracotta (two pieces)  
16 ½ x 8 ½ x 6 in. (41.9 x 21.6 x 15.2 cm)  
Collection of Galen Howard Hilgard



*Wood Witch*  
1957  
Terracotta  
14 ½ x 6 ¼ x 6 ¼ in. (36.8 x 15.9 x 15.9 cm)  
Collection of the Adaline Kent Family



Victor Arnautoff  
*Untitled (Drawing of Adaline Kent)*  
no date  
Graphite on paper  
20 x 13 in. (51 x 33 cm)  
Collection of the Adaline Kent Family

Vitrine: Adaline Kent's Studio



Adaline Kent seated in her studio  
Not dated  
Photograph on board



Adaline Kent in her studio at 523 Francisco  
Street, San Francisco, 1956  
Silver gelatin print



Adaline Kent working on a sculpture, *Night  
Club*, 1930  
Silver gelatin print



Gymnastics hoops that hung in Adaline Kent's studio



Sculpting tools used by Adaline Kent

**Vitrine: Exhibitions and Betty Parsons Gallery**



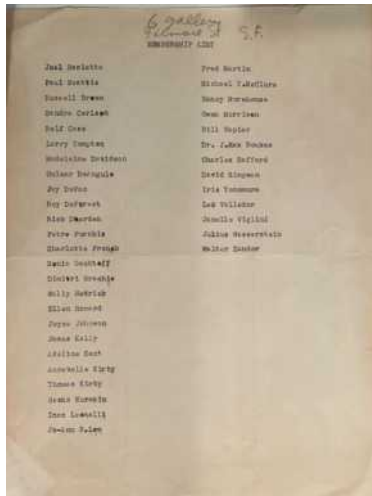
*Artists for Stevensens* exhibition announcement  
Not dated



Preview for '57 Group exhibition announcement at Betty Parsons Gallery, New York, NY 1956-1957



Adaline Kent's French driver's license 1926



Six Gallery, San Francisco membership list Not dated



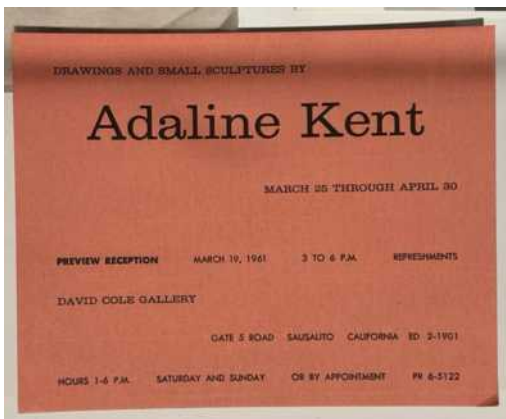
Announcement card for *Adaline Kent Sculpture* exhibition at Betty Parsons Gallery, New York, NY 1953



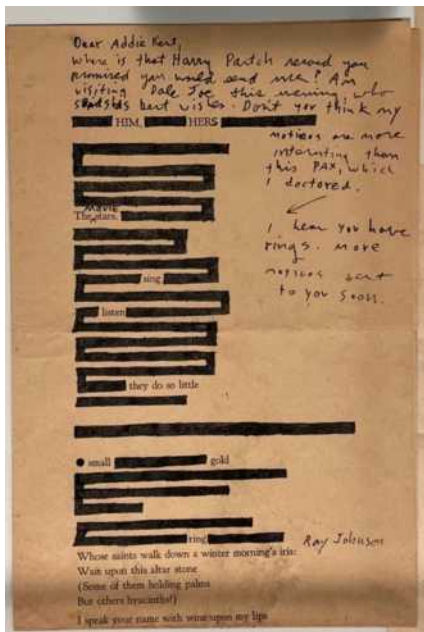
*Adaline Kent Memorial Exhibition* brochure  
1958



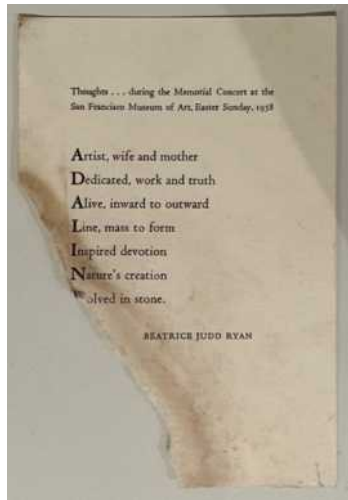
Sketch for design in *Sawdust and Spangles*, 1942  
SFMA exhibition  
Not dated  
Graphite, colored pencil, and pastel on paper  
17 ½ x 12 inches



Announcement card for *Drawings and Small Sculptures by Adaline Kent* exhibition at David Cole Gallery, Sausalito, CA  
1961



Ray Johnson  
 Untitled (Dear Addie Kent)  
 Ink on paper  
 Not dated







Beatrice Judd Ryan  
 Untitled (Adaline Kent)  
 Ink on paper

**Vitrine: Jewelry and commissions**



Untitled (Abstract Bird Pin)  
 Not dated  
 Silver  
 2 3/8 x 3 3/4 inches  
 Collection of Galen Howard Hilgard



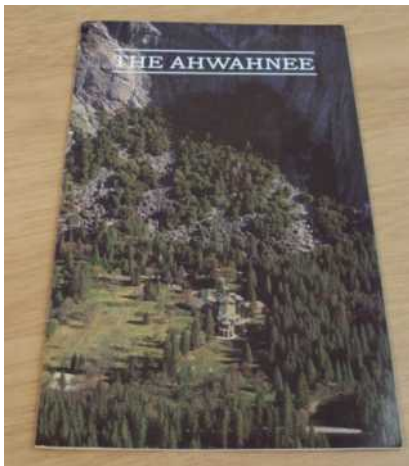
	<p>Untitled (Silver Crown Pin)  Not dated  Silver  1 5/8 in. x 3 1/8 in.  Collection of Galen Howard Hilgard</p>
	<p>Untitled (Star Pin)  Not dated  Silver  2 x 2 inches  Collection of Galen Howard Hilgard</p>
	<p>Adaline Kent  Untitled (necklace)  c. 1956  Ceramic pendant and leather strip  Dimensions variable  Collection of Galen Howard Hilgard</p>
	<p>Untitled (Ash Tray)  Not dated  White cement with black pebble inclusions  4 3/4 in. diam x 1 in deep  Collection of Julia Hilgard Ritter</p>



Imogen Cunningham  
Adaline Kent's "Maquette for Monument for Heros"  
1943  
Gelatin silver print  
10 x 8 inches  
Collection of the Adaline Kent Family, Imogen Cunningham Trust



Minutes to the Last Meeting (Wallpaper design)  
c. 1945  
Gelatin silver print  
7 3/4 x 9 inches  
Collection of the Adaline Kent Family



The Ahwahnee  
1964  
5 3/4 x 9 inches  
Collection of Galen Howard Hilgard

***Vitrine: Island, Donnell Pool and House Beautiful***



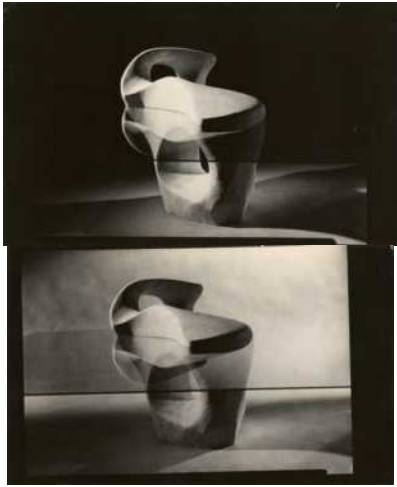
Rondal Partridge  
*Donnell Family Pool Designed by Thomas Church, with Island by Adaline Kent*  
c. 1948  
Gelatin silver print  
8x10 inches  
The Adaline Kent Family, Rondal Partridge Archive



Cover of *House Beautiful*, April 1951. Donnell Family Pool designed by Thomas Church 1951  
The Adaline Kent Family, Rondal Partridge Archive



Page from *House Beautiful*, April 1951. Donnell Family Pool designed by Thomas Church 1951  
The Adaline Kent Family, Rondal Partridge Archive



Model for Adaline Kent's sculpture *Island*, c. 1948



Model for Adaline Kent's sculpture *Island* c. 1948

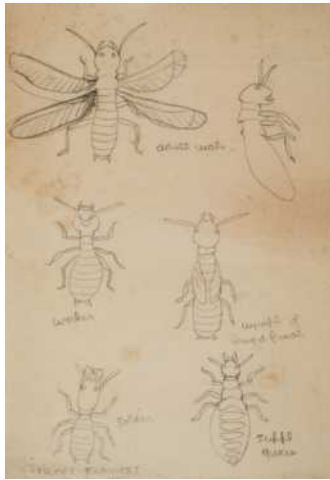
**Vitrine: High Sierra and photos of Mountains**



Adaline Kent's collection of rocks and shells c. 1950



Adaline Kent's sketchbooks



Termés (Termites) sketch  
Date unknown  
Graphite on paper  
7 ¼ x 5 inches  
Collection of Galen Howard Hilgard



Photographs from Adaline Kent's visits to the High Sierra  
Not dated  
4x5 (all)  
Gelatin silver print